

# CoraLite® Plus 647-conjugated KDM1 Polyclonal antibody

Catalog Number: CL647-20813

Featured Product

## Basic Information

**Catalog Number:**

CL647-20813

**Size:**

1000 µg/ml

**Source:**

Rabbit

**Isotype:**

IgG

**Immunogen Catalog Number:**

AG14778

**GenBank Accession Number:**

BC040194

**GeneID (NCBI):**

23028

**UNIPROT ID:**

O60341

**Full Name:**

lysine (K)-specific demethylase 1

**Calculated MW:**

876 aa, 95 kDa

**Observed MW:**

110 kDa

**Purification Method:**

Antigen affinity purification

**Excitation/Emission maxima  
wavelengths:**

654 nm / 674 nm

## Applications

**Tested Applications:**

FC (Intra)

**Species Specificity:**

human

## Background Information

Lysine specific demethylase 1 (LSD1/BHC110/KIAA0601/p110b/AOF2/KDM1) is an amine oxidase that catalyzes histone demethylation via a flavin adenine dinucleotide (FAD)-dependent oxidative reaction (PMID:19703393). This protein belongs to the flavin monoamine oxidase family. Its structure and function is conserved from yeast to human and it is typically associated to CoREST, a corepressor protein, and histone deacetylases HDAC1 and HDAC2. Human LSD1 consists of 852 amino acids and comprises an N-terminal SWIRM domain, involved in protein interactions, and a C-terminal amine oxidase domain, which contains an insertion that forms the CoREST interacting site (the so-called tower domain) (PMID:20164337). It has 2 isoforms produced by alternative splicing with the calculated molecular mass of 93-95 kDa and apparent molecular mass of 110 kDa.

## Storage

**Storage:**

Store at -20°C. Avoid exposure to light. Stable for one year after shipment.

**Storage Buffer:**

PBS with 50% Glycerol, 0.05% Proclin300, 0.5% BSA, pH 7.3.

Aliquoting is unnecessary for -20°C storage

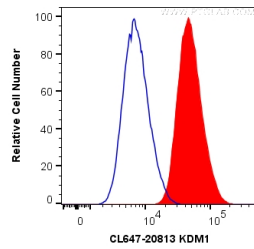
For technical support and original validation data for this product please contact:

T: 4006900926

E: [Proteintech-CN@ptglab.com](mailto:Proteintech-CN@ptglab.com)W: [ptgcn.com](http://ptgcn.com)

This product is exclusively available under Proteintech Group brand and is not available to purchase from any other manufacturer.

## Selected Validation Data



1X10<sup>6</sup> MCF-7 cells were intracellularly stained with 0.2 ug CoraLite® Plus 647 Anti-Human KDM1 (CL647-20813) (red), or 0.2 ug CL647-30000; Rabbit IgG Isotype Control (blue). Cells were fixed and permeabilized with Transcription Factor Staining Buffer Kit (PF00011).