

For Research Use Only

CoraLite® Plus 647-conjugated MIF Polyclonal antibody



Catalog Number: CL647-20415

Featured Product

Basic Information

Catalog Number:

CL647-20415

Size:

1000 µg/ml

Source:

Rabbit

Isotype:

IgG

Immunogen Catalog Number:

AG14058

GenBank Accession Number:

BC000447

GeneID (NCBI):

4282

UNIPROT ID:

P14174

Full Name:

macrophage migration inhibitory factor (glycosylation-inhibiting factor)

Calculated MW:

115 aa, 12 kDa

Observed MW:

12 kDa

Purification Method:

Antigen affinity purification

Excitation/Emission maxima wavelengths:

654 nm / 674 nm

Applications

Tested Applications:

FC (Intra)

Species Specificity:

human, rat, mouse

Background Information

Storage

Storage:

Store at -20°C. Avoid exposure to light. Stable for one year after shipment.

Storage Buffer:

PBS with 50% Glycerol, 0.05% Proclin300, 0.5% BSA, pH 7.3.

Aliquoting is unnecessary for -20°C storage

For technical support and original validation data for this product please contact:

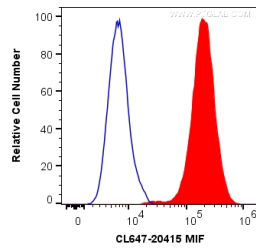
T: 4006900926

E: Proteintech-CN@ptglab.com

W: ptgcn.com

This product is exclusively available under Proteintech Group brand and is not available to purchase from any other manufacturer.

Selected Validation Data



1×10^6 A549 cells were intracellularly stained with 0.2 μ g CoraLite® Plus 647 Anti-Human MIF (CL647-20415) (red), or 0.2 μ g CL647-30000 Rabbit IgG (blue). Cells were fixed with 4% PFA and permeabilized with Flow Cytometry Perm Buffer (PF00011-C).