

CoraLite® Plus 647-conjugated Cytokeratin 10 Polyclonal antibody

Catalog Number: **CL647-18343**

Basic Information

Catalog Number:

CL647-18343

Size:

1000 µg/ml

Source:

Rabbit

Isotype:

IgG

Immunogen Catalog Number:

AG13136

GenBank Accession Number:

BC034697

GeneID (NCBI):

3858

UNIPROT ID:

P13645

Full Name:

keratin 10

Calculated MW:

584 aa, 59 kDa

Purification Method:

Antigen affinity purification

Excitation/Emission maxima wavelengths:

654 nm / 674 nm

Applications

Tested Applications:

FC (Intra)

Species Specificity:

human, mouse, rat

Background Information

Keratins are a large family of proteins that form the intermediate filament cytoskeleton of epithelial cells, which are classified into two major sequence types. Type I keratins are a group of acidic intermediate filament proteins, including K9-K23, and the hair keratins Ha1-Ha8. Type II keratins are the basic or neutral counterparts to the acidic type I keratins, including K1-K8, and the hair keratins, Hb1-Hb6. As a type I keratin, keratin 10 is a suprabasal marker of differentiation in stratified squamous epithelia.

Storage

Storage:

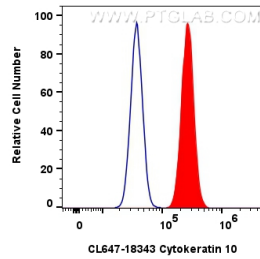
Store at -20°C. Avoid exposure to light. Stable for one year after shipment.

Storage Buffer:

PBS with 50% Glycerol, 0.05% Proclin300, 0.5% BSA, pH 7.3.

Aliquoting is unnecessary for -20°C storage

Selected Validation Data



1×10^6 A431 cells were intracellularly stained with 0.8 μg CoraLite® Plus 647-conjugated Cytokeratin 10 Polyclonal antibody (CL647-18343) (red), or 0.8 μg CoraLite® Plus 647-conjugated Rabbit IgG control Rabbit PolyAb (CL647-30000) (blue). Cells were fixed with 4% PFA and permeabilized with Flow Cytometry Perm Buffer (PF00011-C).