

For Research Use Only

CoraLite® Plus 647-conjugated Synaptophysin Polyclonal antibody

Catalog Number: CL647-17785

1 Publications



Basic Information

Catalog Number:

CL647-17785

Source:

Rabbit

Isotype:

IgG

Immunogen Catalog Number:

AG11781

GenBank Accession Number:

BC064550

GeneID (NCBI):

6855

UNIPROT ID:

P08247

Full Name:

synaptophysin

Calculated MW:

313 aa, 34 kDa

Observed MW:

38-40 kDa

Purification Method:

Antigen affinity purification

Recommended Dilutions:

IF-P: 1:50-1:500

FC (Intra): 0.40 ug per 10⁶ cells in a 100 µl suspension

Excitation/Emission maxima wavelengths:

654 nm / 674 nm

Applications

Tested Applications:

IF-P, FC (Intra)

Cited Applications:

IF

Species Specificity:

human, mouse

Cited Species:

mouse

Positive Controls:

IF-P: mouse pancreas tissue, rat brain tissue

FC (Intra): PC-12 cells,

Background Information

Synaptophysin (SYP, also known as major synaptic vesicle protein p38) is a 38-kDa integral membrane glycoprotein that regulates synaptic vesicle endocytosis. It is the most abundant synaptic vesicle protein by mass. Synaptophysin is present in neuroendocrine cells and neurons that participate in synaptic transmission. Synaptophysin is a useful marker for identification of neuroendocrine cells and neoplasms. (PMID: 3010302; 21658579)

Notable Publications

Author	Pubmed ID	Journal	Application
Xuhui Ge	40328251	Neuron	IF

Storage

Storage:

Store at -20°C. Avoid exposure to light. Stable for one year after shipment.

Storage Buffer:

PBS with 50% glycerol, 0.05% Proclin300, 0.5% BSA, pH7.3

Aliquoting is unnecessary for -20°C storage

For technical support and original validation data for this product please contact:

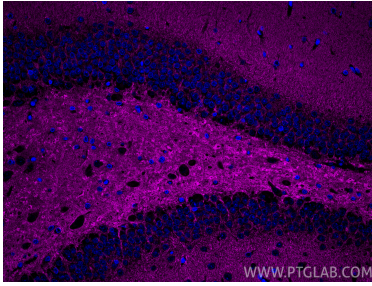
T: 4006900926

E: Proteintech-CN@ptglab.com

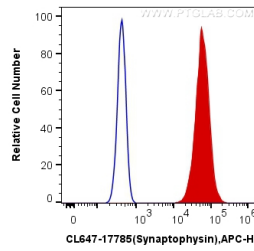
W: ptgcn.com

This product is exclusively available under Proteintech Group brand and is not available to purchase from any other manufacturer.

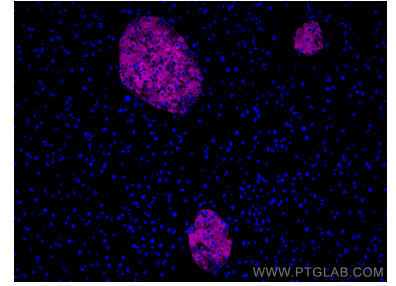
Selected Validation Data



Immunofluorescent analysis of (4% PFA) fixed paraffin-embedded rat brain tissue using Coralite® Plus 647 Synaptophysin antibody (CL647-17785) at dilution of 1:200. Heat mediated antigen retrieval with Tris-EDTA buffer (pH 9.0).



1X10⁶ PC-12 cells were intracellularly stained with 0.4 ug Coralite® Plus 647 Anti-Human Synaptophysin (CL647-17785) (red), or 0.4 ug Control Antibody. Cells were fixed with 4% PFA and permeabilized with Flow Cytometry Perm Buffer.



Immunofluorescent analysis of (4% PFA) fixed paraffin-embedded mouse pancreas tissue using Coralite® Plus 647 Synaptophysin antibody (CL647-17785) at dilution of 1:200. Heat mediated antigen retrieval with Tris-EDTA buffer (pH 9.0).