

For Research Use Only

CoraLite® Plus 647-conjugated ARL13B Polyclonal antibody



Catalog Number: CL647-17711

Featured Product

2 Publications

Basic Information

Catalog Number:

CL647-17711

Size:

1000 ug/ml

Source:

Rabbit

Isotype:

IgG

Immunogen Catalog Number:

AG12015

GenBank Accession Number:

BC094725

GeneID (NCBI):

200894

UNIPROT ID:

Q3SXY8

Full Name:

ADP-ribosylation factor-like 13B

Calculated MW:

48 kDa

Observed MW:

40-48 kDa, 66 kDa

Purification Method:

Antigen affinity purification

Recommended Dilutions:

IF/ICC 1:50-1:500

Excitation/Emission maxima wavelengths:

654 nm / 674 nm

Applications

Tested Applications:

IF/ICC

Cited Applications:

IF

Species Specificity:

human, mouse, rat, canine

Cited Species:

rat

Positive Controls:

IF/ICC : MDCK cells,

Background Information

ARL13B, also named as ARL2L1, is a small ciliary G protein of the Ras superfamily. Localized in the cilia, it is required for cilium biogenesis and sonic hedgehog signaling. Defects in ARL13B are the cause of Joubert syndrome (JS) which is an autosomal recessive disorder characterized by a distinctive cerebellar malformation (PMID: 19906870). This antibody detects two specific bands at 60 kDa and 48 kDa. ARL13b is predicted to be a 48 kDa protein, and the 60 kDa band is likely to represent a modified form of ARL13b. ARL13B can be used to mark the cilia (PMID: 22072986).

Notable Publications

Author	Pubmed ID	Journal	Application
Elina Kostyanovskaya	39677731	bioRxiv	IF
Rita R Fagan	38678559	Cell Rep	IF

Storage

Storage:

Store at -20°C. Avoid exposure to light. Stable for one year after shipment.

Storage Buffer:

PBS with 50% Glycerol, 0.05% Proclin300, 0.5% BSA, pH 7.3.

Aliquoting is unnecessary for -20°C storage

For technical support and original validation data for this product please contact:

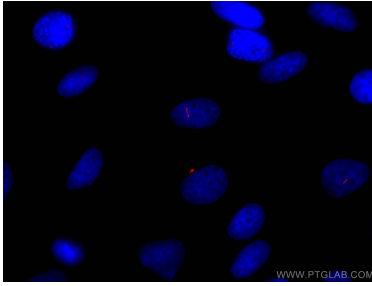
T: 4006900926

E: Proteintech-CN@ptglab.com

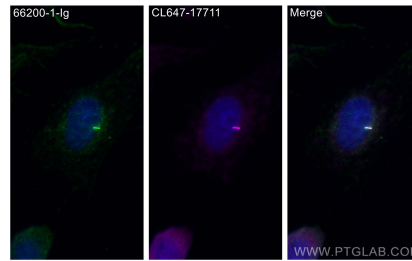
W: ptgcn.com

This product is exclusively available under Proteintech Group brand and is not available to purchase from any other manufacturer.

Selected Validation Data



Immunofluorescent analysis of (4% PFA) fixed MDCK cells using CoraLite® Plus 647-conjugated ARL13B antibody (CL647-17711) at dilution of 1:100.



Immunofluorescent analysis of (4% PFA) fixed MDCK cells using CoraLite® Plus 647 ARL13B antibody (CL647-17711) at dilution of 1:200, Acetyl-Tubulin (Lys40) antibody (66200-1-Ig, Clone: 7E5H8, green).