

For Research Use Only

CoraLite® Plus 647-conjugated GS28 Polyclonal antibody



Catalog Number: CL647-16106

Basic Information

Catalog Number:

CL647-16106

Size:

1000 µg/ml

Source:

Rabbit

Isotype:

IgG

Immunogen Catalog Number:

AG9021

GenBank Accession Number:

BC012620

GeneID (NCBI):

9527

UNIPROT ID:

O95249

Full Name:

golgi SNAP receptor complex member

1

Calculated MW:

28.6 kDa

Observed MW:

28 kDa

Purification Method:

Antigen affinity purification

Excitation/Emission maxima
wavelengths:

654 nm / 674 nm

Applications

Tested Applications:

FC (Intra)

Species Specificity:

human, mouse, rat

Background Information

GS28, also known as GOSR1, is a 28-kDa Golgi SNARE protein that participates in ER-Golgi and intra-Golgi transport. GS28 is considered to be a core component of the Golgi SNARE complex. (PMID: 8638159)

Storage

Storage:

Store at -20°C. Avoid exposure to light. Stable for one year after shipment.

Storage Buffer:

PBS with 50% Glycerol, 0.05% Proclin300, 0.5% BSA, pH 7.3.

Aliquoting is unnecessary for -20°C storage

For technical support and original validation data for this product please contact:

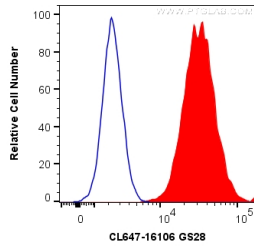
T: 4006900926

E: Proteintech-CN@ptglab.com

W: ptgcn.com

This product is exclusively available under Proteintech Group brand and is not available to purchase from any other manufacturer.

Selected Validation Data



1X10⁶ HeLa cells were intracellularly stained with 0.2 ug CoraLite® Plus 647 Anti-Human GS28 (CL647-16106) (red), or 0.2 ug isotype control (blue). Cells were fixed with 4% PFA and permeabilized with Flow Cytometry Perm Buffer (PF00011-C).