

For Research Use Only

CoraLite® Plus 647-conjugated ACLY Polyclonal antibody



Catalog Number:CL647-15421

Featured Product

Basic Information

Catalog Number:

CL647-15421

Size:

1 mg/mL

Source:

Rabbit

Isotype:

IgG

Immunogen Catalog Number:

AG7709

GenBank Accession Number:

BC006195

GeneID (NCBI):

47

UNIPROT ID:

P53396

Full Name:

ATP citrate lyase

Calculated MW:

121 kDa

Observed MW:

120 kDa

Purification Method:

Antigen affinity purification

Excitation/Emission maxima
wavelengths:

654 nm / 674 nm

Applications

Tested Applications:

FC (Intra)

Species Specificity:

human, mouse, rat

Background Information

ACLY(ATP-citrate synthase) is also named as ACL. It is the primary enzyme responsible for the synthesis of cytosolic acetyl-CoA. ACLY serves as not only a target in oxygenated cells for suppression of lipid synthesis and histone acetylation, but also as a susceptible target in hypoxic cells to restore inhibition of glycolysis. In nonsmall cell lung carcinoma and hepatocellular carcinoma, ACLY is overexpressed compared with normal parenchyma suggesting that ACLY may represent a common target among highly malignant tumors(PMID:19795461). This protein has 2 isoforms produced by alternative splicing.

Storage

Storage:

Store at -20°C. Avoid exposure to light. Stable for one year after shipment.

Storage Buffer:

PBS with 50% Glycerol, 0.05% Proclin300, 0.5% BSA, pH 7.3.

Aliquoting is unnecessary for -20°C storage

For technical support and original validation data for this product please contact:

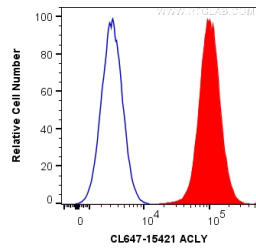
T: 4006900926

E: Proteintech-CN@ptglab.com

W: ptgcn.com

This product is exclusively available under Proteintech Group brand and is not available to purchase from any other manufacturer.

Selected Validation Data



1X10⁶ HepG2 cells were intracellularly stained with 0.2 ug CoraLite® Plus 647 Anti-Human ACLY (CL647-15421) (red), or 0.2 ug Isotype Control (blue). Cells were fixed with 4% PFA and permeabilized with Flow Cytometry Perm Buffer (PF00011-C).