

For Research Use Only

CoraLite® Plus 647-conjugated PKC Gamma Polyclonal antibody



Catalog Number: CL647-14364

Basic Information

Catalog Number:

CL647-14364

Size:

1000 µg/ml

Source:

Rabbit

Isotype:

IgG

Immunogen Catalog Number:

AG5681

GenBank Accession Number:

BC047876

GeneID (NCBI):

5582

UNIPROT ID:

P05129

Full Name:

protein kinase C, gamma

Calculated MW:

78 kDa

Observed MW:

76-80 kDa

Purification Method:

Antigen affinity purification

Recommended Dilutions:

WB 1:500-1:2000

Excitation/Emission maxima
wavelengths:

654 nm / 674 nm

Applications

Tested Applications:

WB

Species Specificity:

human, mouse, rat

Positive Controls:

WB : mouse brain tissue, rat brain tissue

Background Information

Protein kinase C (PKC) is a family of serine- and threonine-specific protein kinases that can be activated by calcium and second messenger diacylglycerol. PKC family members phosphorylate a wide variety of protein targets and are known to be involved in diverse cellular signaling pathways. PKC gamma is a neuron-specific member of the classical PKCs and is activated and translocated to subcellular regions as a result of various stimuli, including diacylglycerol synthesis, increased intracellular Ca(2+) and phorbol esters. Defects in this protein have been associated with spinocerebellar ataxia type 14 (SCA14), an autosomal dominant neurodegenerative disease.

Storage

Storage:

Store at -20°C. Avoid exposure to light.

Storage Buffer:

PBS with 50% Glycerol, 0.05% Proclin300, 0.5% BSA, pH 7.3.

Aliquoting is unnecessary for -20°C storage

For technical support and original validation data for this product please contact:

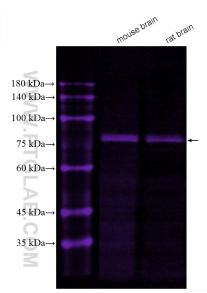
T: 4006900926

E: Proteintech-CN@ptglab.com

W: ptgcn.com

This product is exclusively available under Proteintech Group brand and is not available to purchase from any other manufacturer.

Selected Validation Data



Various lysates were subjected to SDS PAGE followed by western blot with CL647-14364 (PKC Gamma antibody) at dilution of 1:1000 incubated at room temperature for 1.5 hours.