

For Research Use Only

CoraLite® Plus 647-conjugated Spartin, SPG20 Polyclonal antibody



Catalog Number: CL647-13791

Featured Product

Basic Information

Catalog Number:

CL647-13791

Size:

1000 µg/ml

Source:

Rabbit

Isotype:

IgG

Immunogen Catalog Number:

AG4815

GenBank Accession Number:

BC047083

GeneID (NCBI):

23111

UNIPROT ID:

Q8NOX7

Full Name:

spastic paraplegia 20 (Troyer syndrome)

Calculated MW:

75 kDa, 85 kDa

Observed MW:

75 kDa, 84 kDa

Purification Method:

Antigen affinity purification

Recommended Dilutions:

IF 1:50-1:500

Excitation/Emission maxima wavelengths:

654 nm / 674 nm

Applications

Tested Applications:

FC (Intra), IF/ICC

Species Specificity:

human, mouse, rat

Positive Controls:

IF : HepG2 cells,

Background Information

SPG20 (spastic paraplegia 20) gene encodes a multifunctional Spartin protein. SPG20 protein is highly expressed in adipose tissue and may be implicated in endosomal trafficking and microtubule dynamics. SPG20 is mutated in Troyer syndrome, a hereditary spastic paraplegia defined by degeneration of upper motor neurons, recent study showed that regulation of SPG20 on mitochondrial calcium homeostasis may contribute to the pathophysiology of Troyer syndrome. Hypermethylation of SPG20 promoter, found in colorectal cancer patients, may play a role in cytokinesis arrest in colorectal tumorigenesis.

Storage

Storage:

Store at -20°C. Avoid exposure to light.

Storage Buffer:

PBS with 50% Glycerol, 0.05% Proclin300, 0.5% BSA, pH 7.3.

Aliquoting is unnecessary for -20°C storage

For technical support and original validation data for this product please contact:

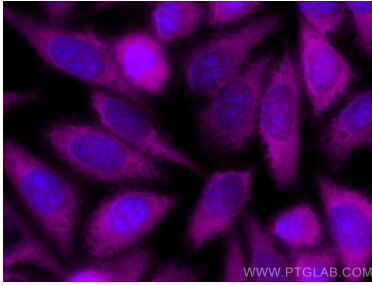
T: 4006900926

E: Proteintech-CN@ptglab.com

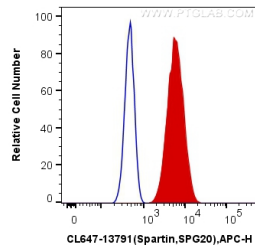
W: ptgcn.com

This product is exclusively available under Proteintech Group brand and is not available to purchase from any other manufacturer.

Selected Validation Data



Immunofluorescent analysis of (-20°C Methanol) fixed HepG2 cells using CoraLite® Plus 647 Spartin, SPG20 antibody (CL647-13791) at dilution of 1:200.



1X10⁶ HepG2 cells were intracellularly stained with 0.4 ug CoraLite® Plus 647 Anti-Human Spartin, SPG20 (CL647-13791) (red), or 0.4 ug Control Antibody. Cells were fixed with 4% PFA and permeabilized with Flow Cytometry Perm Buffer (PF00011-C).