

For Research Use Only

# CoraLite® Plus 647-conjugated CISD2 Polyclonal antibody

Catalog Number: CL647-13318

Featured Product



## Basic Information

Catalog Number:

CL647-13318

Size:

1000 ug/ml

Source:

Rabbit

Isotype:

IgG

Immunogen Catalog Number:

AG4172

GenBank Accession Number:

BC032300

GeneID (NCBI):

493856

UNIPROT ID:

Q8N5K1

Full Name:

CDGSH iron sulfur domain 2

Calculated MW:

135 aa, 15 kDa

Observed MW:

13-15 kDa

Purification Method:

Antigen affinity purification

Excitation/Emission maxima wavelengths:

654 nm / 674 nm

## Applications

Tested Applications:

FC (Intra)

Species Specificity:

human, mouse, rat

## Background Information

CISD2 gene encodes a 15 kDa CDGSH iron-sulfur domain-containing protein 2, which is also named Miner1 or NAF-1, this protein was reported on endoplasmic reticulum membrane or mitochondrion outer membrane. Defects in CISD2 are the cause of Wolfram syndrome type 2 (WFS2), a rare disorder characterized by juvenile-onset insulin-dependent diabetes mellitus with optic atrophy. CISD2 regulates autophagy program by interacting BCL2, contributing to antagonize BECN1-mediated cellular autophagy at the endoplasmic reticulum.

## Storage

Storage:

Store at -20°C. Avoid exposure to light. Stable for one year after shipment.

Storage Buffer:

PBS with 50% Glycerol, 0.05% Proclin300, 0.5% BSA, pH 7.3.

Aliquoting is unnecessary for -20°C storage

For technical support and original validation data for this product please contact:

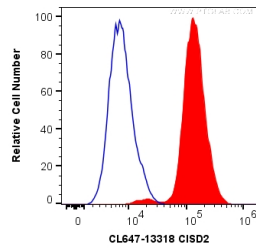
T: 4006900926

E: [Proteintech-CN@ptglab.com](mailto:Proteintech-CN@ptglab.com)

W: [ptgcn.com](http://ptgcn.com)

This product is exclusively available under Proteintech Group brand and is not available to purchase from any other manufacturer.

## Selected Validation Data



1X10<sup>6</sup> HepG2 cells were intracellularly stained with 0 ug CoraLite® Plus 647 Anti-Human CISD2 (CL647-13318) (red), or 0.2 ug isotype control (blue). Cells were fixed with 4% PFA and permeabilized with Flow Cytometry Perm Buffer (PF00011-C).