

For Research Use Only

CoraLite® Plus 647-conjugated CYP1A1 Polyclonal antibody



Catalog Number: CL647-13241

Featured Product

Basic Information

Catalog Number:

CL647-13241

Size:

1000 µg/ml

Source:

Rabbit

Isotype:

IgG

Immunogen Catalog Number:

AG3990

GenBank Accession Number:

BC023019

GeneID (NCBI):

1543

UNIPROT ID:

P04798

Full Name:

cytochrome P450, family 1, subfamily
A, polypeptide 1

Calculated MW:

512 aa, 58 kDa

Observed MW:

50-58 kDa

Purification Method:

Antigen affinity purification

Excitation/Emission maxima
wavelengths:

654 nm / 674 nm

Applications

Tested Applications:

FC (Intra)

Species Specificity:

human, mouse, pig

Background Information

Storage

Storage:

Store at -20°C. Avoid exposure to light. Stable for one year after shipment.

Storage Buffer:

PBS with 50% Glycerol, 0.05% Proclin300, 0.5% BSA, pH 7.3.

Aliquoting is unnecessary for -20°C storage

For technical support and original validation data for this product please contact:

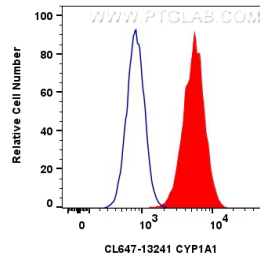
T: 4006900926

E: Proteintech-CN@ptglab.com

W: ptgcn.com

This product is exclusively available under Proteintech Group brand and is not available to purchase from any other manufacturer.

Selected Validation Data



1x10⁶ HepG2 cells were intracellularly stained with 0.8 ug CoraLite® Plus 647-conjugated CYP1A1 Polyclonal antibody (CL647-13241)(red), or 0.8 ug CoraLite® Plus 647-conjugated Rabbit IgG control Rabbit PolyAb (CL647-30000) (blue). Cells were fixed with 4% PFA and permeabilized with Flow Cytometry Perm Buffer (PF00011-C).