

CoraLite® Plus 647-conjugated MITF Polyclonal antibody

Catalog Number: **CL647-13092**

Basic Information

Catalog Number:

CL647-13092

Size:

1000 µg/ml

Source:

Rabbit

Isotype:

IgG

Immunogen Catalog Number:

AG3679

GenBank Accession Number:

BC012503

GeneID (NCBI):

4286

UNIPROT ID:

O75030

Full Name:

microphthalmia-associated transcription factor

Calculated MW:

91 aa, 10 kDa, 59 kDa

Observed MW:

59-65 kDa

Purification Method:

Antigen affinity purification

Excitation/Emission maxima wavelengths:

654 nm / 674 nm

Applications

Tested Applications:

FC (Intra)

Species Specificity:

human, mouse, rat

Background Information

The retinal pigment epithelium (RPE) has an essential role in maintaining visual function and dedifferentiation of RPE contributes to the pathophysiology of several ocular diseases [PMID: 22523078]. Microphthalmia-associated transcription factor (MITF) is a key regulator of RPE differentiation that is also down-regulated in dedifferentiated hfRPE cells. MITF is a basic helix-loop-helix (hHLH)-leucine zipper protein that involves in the development of various cell types, including neural crest-derived melanocytes and optic cup-derived retinal pigment epithelial cells [PMID: 10578055].

Storage

Storage:

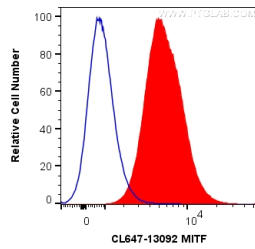
Store at -20°C. Avoid exposure to light. Stable for one year after shipment.

Storage Buffer:

PBS with 50% Glycerol, 0.05% Proclin300, 0.5% BSA, pH 7.3.

Aliquoting is unnecessary for -20°C storage

Selected Validation Data



1X10⁶ Jurkat cells were intracellularly stained with 0.2 ug CoraLite® Plus 647 Anti-Human MITF (CL647-13092) (red), or 0.2 ug CL647-30000 Rabbit IgG (blue). Cells were fixed and permeabilized with Transcription Factor Staining Buffer Kit (PF00011).