

For Research Use Only

CoraLite® Plus 647-conjugated DRP1 (C-terminal) Polyclonal antibody

Catalog Number: CL647-12957

Featured Product



Basic Information

Catalog Number:

CL647-12957

Source:

Rabbit

Isotype:

IgG

Immunogen Catalog Number:

AG3644

GenBank Accession Number:

BC024590

GeneID (NCBI):

10059

UNIPROT ID:

O00429

Full Name:

dynamin 1-like

Calculated MW:

736 aa, 82 kDa

Observed MW:

75-80 kDa

Purification Method:

Antigen affinity purification

Recommended Dilutions:

IF/ICC: 1:50-1:500

FC (Intra): 0.20 ug per 10⁶ cells in a 100 µl suspension

Excitation/Emission maxima wavelengths:

654 nm / 674 nm

Applications

Tested Applications:

IF/ICC, FC (Intra)

Species Specificity:

human, mouse, rat

Positive Controls:

IF/ICC : HeLa cells,

FC (Intra) : HeLa cells,

Background Information

DNM1L (Dynamin-1-like protein), also known as dynamin-related protein 1 (DRP1), belongs to the dynamin family of large GTPases that mediate membrane remodeling during a variety of cellular processes. DNM1L has an important role in the division of growing mitochondria and peroxisomes and also mediates outer mitochondrial membrane fission in mammalian cells. DNM1L is ubiquitously expressed with abundant expression in skeletal muscle, heart, kidney and brain. Variable isoforms of DNM1L have been reported in a tissue-specific manner due to the alternative splicing.

Storage

Storage:

Store at -20°C. Avoid exposure to light. Stable for one year after shipment.

Storage Buffer:

PBS with 50% glycerol, 0.05% Proclin300, 0.5% BSA, pH7.3

Aliquoting is unnecessary for -20°C storage

For technical support and original validation data for this product please contact:

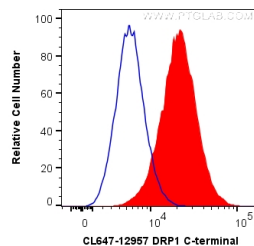
T: 4006900926

E: Proteintech-CN@ptglab.com

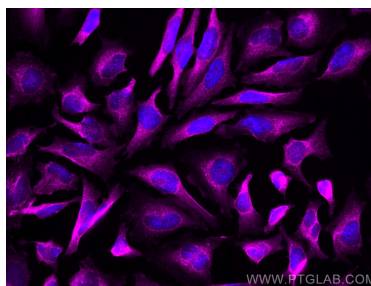
W: ptgcn.com

This product is exclusively available under Proteintech Group brand and is not available to purchase from any other manufacturer.

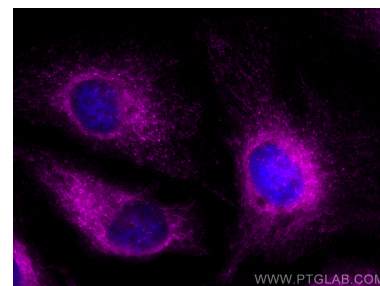
Selected Validation Data



1X10⁶ HeLa cells were intracellularly stained with 0.2 ug Coralite® Plus 647 Anti-Human DRP1 (C-terminal) (CL647-12957) (red), or 0.2 ug Control Antibody (blue). Cells were fixed with 4% PFA and permeabilized with Flow Cytometry Perm Buffer.



Immunofluorescent analysis of (4% PFA) fixed HeLa cells using Coralite® Plus 647 DRP1 (C-terminal) antibody (CL647-12957) at dilution of 1:200.



Immunofluorescent analysis of (4% PFA) fixed HeLa cells using Coralite® Plus 647 DRP1 (C-terminal) antibody (CL647-12957) at dilution of 1:200.