

For Research Use Only

CoraLite® Plus 647-conjugated GOLGA2/GM130 Polyclonal antibody



Catalog Number: CL647-11308

Basic Information

Catalog Number:

CL647-11308

Size:

1000 µg/ml

Source:

Rabbit

Isotype:

IgG

Immunogen Catalog Number:

AG1848

GenBank Accession Number:

BC014188

GeneID (NCBI):

2801

UNIPROT ID:

Q08379

Full Name:

golgi autoantigen, golgin subfamily
a, 2

Calculated MW:

111 kDa

Observed MW:

130 kDa

Purification Method:

Antigen affinity purification

Recommended Dilutions:

IF/ICC 1:50-1:500

Excitation/Emission maxima
wavelengths:

654 nm / 674 nm

Applications

Tested Applications:

IF/ICC, FC (Intra)

Species Specificity:

human, canine

Positive Controls:

IF/ICC : HepG2 cells,

Background Information

GOLGA2, also known as GM130, is a 130 kDa cis-Golgi matrix protein, one component of the detergent and salt-resistant Golgi matrix. It is a peripheral membrane protein highly bound to the Golgi membrane and localized mainly at the cytoplasmic face of the cis-Golgi membrane. Together with its interacting partner proteins, including p115, giantin, GRASP65, and Rab GTPase, GOLGA2/GM130 is involved in regulating ER-to-Golgi transport and maintaining the Golgi structure. Emerging evidence suggests that the GOLGA2/GM130 has potential roles in the control of glycosylation, cell cycle progression, and higher-order cell functions such as cell polarization and directed cell migration. (PMID: 20197635)

Storage

Storage:

Store at -20°C. Avoid exposure to light. Stable for one year after shipment.

Storage Buffer:

PBS with 50% Glycerol, 0.05% Proclin300, 0.5% BSA, pH 7.3.

Aliquoting is unnecessary for -20°C storage

For technical support and original validation data for this product please contact:

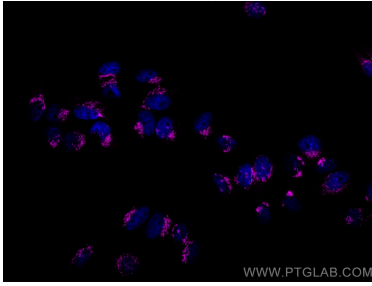
T: 4006900926

E: Proteintech-CN@ptglab.com

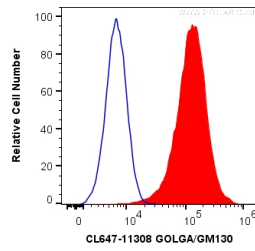
W: ptgcn.com

This product is exclusively available under Proteintech Group brand and is not available to purchase from any other manufacturer.

Selected Validation Data



Immunofluorescent analysis of (4% PFA) fixed HepG2 cells using CoraLite® Plus 647 GOLGA2/GM130 antibody (CL647-11308) at dilution of 1:200.



1X10⁶ HeLa cells were intracellularly stained with 0.2 ug CoraLite® Plus 647 Anti-Human GOLGA2/GM130 (CL647-11308) (red), or 0.2 ug Control Antibody (blue). Cells were fixed with 4% PFA and permeabilized with Flow Cytometry Perm Buffer (PF00011-C).