

For Research Use Only

CoraLite® Plus 647-conjugated ENO1 Polyclonal antibody



Catalog Number: **CL647-11204**

Featured Product

Basic Information

Catalog Number:

CL647-11204

Size:

1000 µg/ml

Source:

Rabbit

Isotype:

IgG

Immunogen Catalog Number:

AG1692

GenBank Accession Number:

BC015641

GeneID (NCBI):

2023

ENSEMBL Gene ID:

ENSG00000074800

UNIPROT ID:

P06733

Full Name:

enolase 1, (alpha)

Calculated MW:

47 kDa

Observed MW:

47 kDa

Purification Method:

Antigen affinity purification

Recommended Dilutions:

IF/ICC 1:50-1:500

Excitation/Emission maxima
wavelengths:

654 nm / 674 nm

Applications

Tested Applications:

IF/ICC, FC (Intra)

Species Specificity:

human, mouse, rat

Positive Controls:

IF/ICC : HepG2 cells,

Background Information

Enolase is an important glycolytic enzyme involved in the interconversion of 2-phosphoglycerate to phosphoenolpyruvate. Enolase were down-regulated in oxLDL-treated cells or in VLDL-treated cells. And it identified which are associated with glucose metabolism were down-regulated in the process of foam cells formation. (19756395)

Storage

Storage:

Store at -20°C. Avoid exposure to light. Stable for one year after shipment.

Storage Buffer:

PBS with 50% Glycerol, 0.05% Proclin300, 0.5% BSA, pH 7.3.

Aliquoting is unnecessary for -20°C storage

For technical support and original validation data for this product please contact:

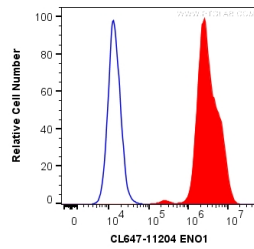
T: 4006900926

E: Proteintech-CN@ptglab.com

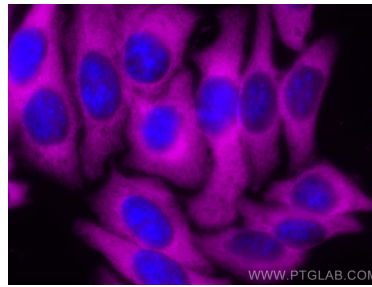
W: ptgcn.com

This product is exclusively available under Proteintech Group brand and is not available to purchase from any other manufacturer.

Selected Validation Data



1X10⁶ HeLa cells were intracellularly stained with 0.2 ug CoraLite® Plus 647 Anti-Human ENO1 (CL647-11204) (red), or 0.2 ug Control Antibody. Cells were fixed with 4% PFA and permeabilized with Flow Cytometry Perm Buffer (PF00011-C).



Immunofluorescent analysis of (-20°C Methanol) fixed HepG2 cells using CoraLite® Plus 647 ENO1 antibody (CL647-11204) at dilution of 1:100.