

For Research Use Only

CoraLite® Plus 647-conjugated MMP1 Polyclonal antibody

Catalog Number:CL647-10371

Featured Product



Basic Information

Catalog Number:

CL647-10371

Source:

Rabbit

Isotype:

IgG

Immunogen Catalog Number:

AG0547

GenBank Accession Number:

BC013875

GeneID (NCBI):

4312

UNIPROT ID:

P03956

Full Name:

matrix metalloproteinase 1
(interstitial collagenase)

Calculated MW:

54 kDa

Observed MW:

52-56 kDa, 62 kDa

Purification Method:

Antigen affinity purification

Recommended Dilutions:

IF-P: 1:50-1:500

FC (Intra): 0.20 ug per 10⁶ cells in a
100 µl suspension

**Excitation/Emission maxima
wavelengths:**

654 nm / 674 nm

Applications

Tested Applications:

IF-P, FC (Intra)

Species Specificity:

human, mouse, rat

Positive Controls:

IF-P: mouse stomach tissue,

FC (Intra): HepG2 cells,

Background Information

MMP1, also named as CLG, belongs to the peptidase M10A family. MMP is the main enzyme that cleaves fibrillar collagen, namely types I, II, III, VII, and X. It is involved in cell migration and invasion, and is frequently up-regulated in cancer cells. It can be cleavage to two major forms (22 kDa and 27 kDa) by undergoing autolytic, and the minor form (25 kDa) is the glycosylated form of the 22 kDa form. The 27 kDa form has no activity while the 22/25 kDa form can act as activator for collagenase. The sizes of pro-MMP-1 and active MMP-1 from human synovial fibroblasts have been reported as 52 to 56 kDa, depending on glycosylation, and 41 to 45 kDa, respectively. In addition, a band of 62-kDa observed in the current study is pro-MMP-1 (PMID:9418730).

Storage

Storage:

Store at -20°C. Avoid exposure to light. Stable for one year after shipment.

Storage Buffer:

PBS with 50% glycerol, 0.05% Proclin300, 0.5% BSA, pH7.3

Aliquoting is unnecessary for -20°C storage

For technical support and original validation data for this product please contact:

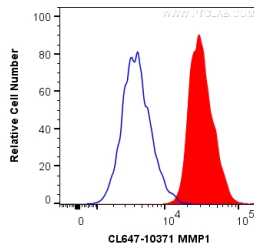
T: 4006900926

E: Proteintech-CN@ptglab.com

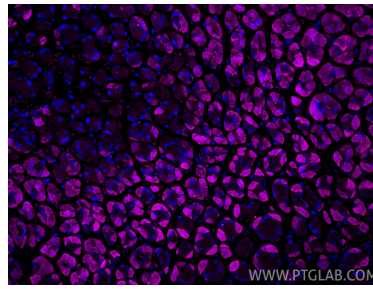
W: ptgcn.com

This product is exclusively available under Proteintech Group brand and is not available to purchase from any other manufacturer.

Selected Validation Data



1X10⁶ HepG2 cells were intracellularly stained with 0.2 ug CoraLite® Plus 647 Anti-Human MMP1 (CL647-10371) (red), or 0.2 ug isotype control (blue). Cells were fixed with 4% PFA and permeabilized with Flow Cytometry Perm Buffer.



Immunofluorescent analysis of (4% PFA) fixed paraffin-embedded mouse stomach tissue using CoraLite® Plus 647 MMP1 antibody (CL647-10371) at dilution of 1:200. Heat mediated antigen retrieval with Tris-EDTA buffer (pH 9.0).