

For Research Use Only

# CoraLite®594 Anti-Human CD9 Rabbit scFv Antibody

Catalog Number:CL594-SF98095



## Basic Information

Catalog Number:  
CL594-SF98095

Source:  
Rabbit

Type:  
scFv

Immunogen Catalog Number:  
EG1037

GenBank Accession Number:  
NM\_001769.4

GeneID (NCBI):  
928

Full Name:  
CD9 molecule

Calculated MW:  
25 kDa

Purification Method:  
Affinity purification

CloneNo.:  
240830E6

Recommended Dilutions:  
FC: 0.25 ug per 10<sup>6</sup> cells in a 100 µl suspension

Excitation/Emission maxima wavelengths:  
588 nm / 604 nm

## Applications

Tested Applications:  
FC

Species Specificity:  
human

Positive Controls:

FC : human PBMCs,

## Background Information

The cell-surface molecule CD9, a member of the transmembrane-4 superfamily, interacts with the integrin family and other membrane proteins, and is postulated to participate in cell migration and adhesion. Expression of CD9 enhances membrane fusion between muscle cells and promotes viral infection in some cells (PMID:10459022). It is often used as a mesenchymal stem cell marker (PMID:18005405).

## Storage

Storage:

Store at 2-8°C. Avoid exposure to light. Stable for one year after shipment.

Storage Buffer:

50mM HEPES, 150mM NaCl, 5mM EDTA, 0.1% CHAPS, 10% Sucrose and 0.1% Proclin300, pH7.3

For technical support and original validation data for this product please contact:

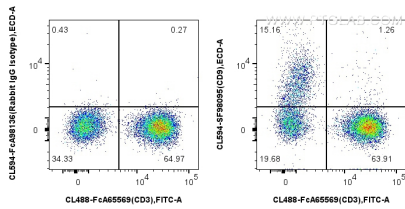
T: 4006900926

E: Proteintech-CN@ptglab.com

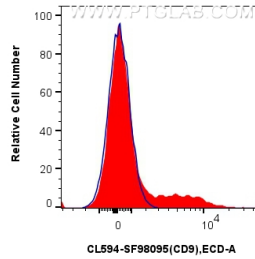
W: ptgcn.com

**This product is exclusively available under Proteintech Group brand and is not available to purchase from any other manufacturer.**

## Selected Validation Data



1x10<sup>6</sup> human PBMCs were surface stained with FcZero-rAb@ CoraLite® Plus 488 Anti-Human CD3 (OKT3), and CoraLite®594 Anti-Human CD9 Rabbit scFv Antibody (CL594-SF98095, Clone: 240830E6) or FcZero-rAb@ CoraLite® Plus 594 Rabbit IgG Isotype Control Recombinant Antibody (CL594-FcA98136, Clone: 240953C9). Cells were not fixed.



1x10<sup>6</sup> human PBMCs were surface stained with 0.25 ug CoraLite®594 Anti-Human CD9 Rabbit scFv Antibody (CL594-SF98095, Clone: 240830E6)(red) or FcZero-rAb@ CoraLite® Plus 594 Rabbit IgG Isotype Control Recombinant Antibody (CL594-FcA98136, Clone: 240953C9) (blue). Cells were not fixed.