

For Research Use Only

# FcZero-rAb® CoraLite® Plus 594 Anti-Human LILRA5/CD85f Rabbit Recombinant Antibody

Catalog Number: CL594-FcA98477



## Basic Information

**Catalog Number:**

CL594-FcA98477

**Concentration:**

100tests, 5 ul/test

**Source:**

Rabbit

**Isotype:**

IgG

**Immunogen Catalog Number:**

EG2737

**GenBank Accession Number:**

NM\_021250.4

**GeneID (NCBI):**

353514

**UNIPROT ID:**

A6NI73-1

**Full Name:**

leukocyte immunoglobulin-like receptor, subfamily A (with TM domain), member 5

**Calculated MW:**

33 kDa

**Purification Method:**

Protein A purification

**CloneNo.:**

250298G11

**Recommended Dilutions:**

FC: 5 ul per 10<sup>6</sup> cells in a 100 µl suspension

**Excitation/Emission maxima wavelengths:**

588 nm / 604 nm

## Applications

**Tested Applications:**

FC

**Species Specificity:**

human

**Positive Controls:**

FC : human PBMCs,

## Background Information

LILRA5, also named as CD85f, ILT11, LLRB7 or LIR9, is a member of the leukocyte immunoglobulin-like receptor (LIR) family, which is a group of immune inhibitory and stimulatory receptors (PMID: 15304001). There are two membrane-bound and two soluble forms of LILRA5. The transmembrane LILRA5 contains a short cytoplasmic domain and a charged arginine residue within the transmembrane region (PMID: 19009525). It is mostly expressed in myeloid cells, including monocytes and neutrophils (PMID: 12393390). LILRA5 may play a role in triggering innate immune responses. It does not function in class I MHC antigens recognition (PMID: 16675463).

## Storage

**Storage:**

Store at 2-8°C. Avoid exposure to light. Stable for one year after shipment.

**Storage Buffer:**

PBS with 0.09% sodium azide and 0.5% BSA, pH7.3

For technical support and original validation data for this product please contact:

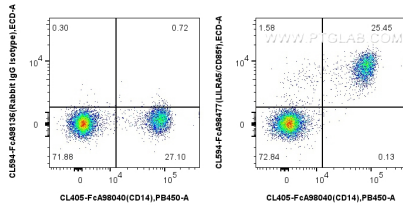
T: 4006900926

E: Proteintech-CN@ptglab.com

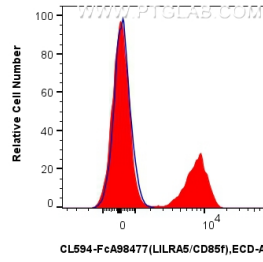
W: ptgcn.com

**This product is exclusively available under Proteintech Group brand and is not available to purchase from any other manufacturer.**

## Selected Validation Data



1x10<sup>6</sup> human PBMCs were surface stained with CoraLite® Plus 405 Anti-Human CD14, and 5 ul CoraLite® Plus 594 Anti-Human LILRA5/CD85f Rabbit RecAb (CL594-FcA98477, Clone: 250298G11) or CoraLite® 594 Rabbit IgG Isotype Control RecAb (CL594-FcA98136, Clone: 240953C9). Cells were not fixed.



1x10<sup>6</sup> human PBMCs were surface stained with 5 ul CoraLite® Plus 594 Anti-Human LILRA5/CD85f Rabbit RecAb (CL594-FcA98477, Clone: 250298G11) (red) or CoraLite® 594 Rabbit IgG Isotype Control RecAb (CL594-FcA98136, Clone: 240953C9) (blue). Cells were not fixed.