

For Research Use Only

FcZero-rAb® CoraLite® Plus 594 Anti-Mouse Ly-6G Rabbit Recombinant Antibody

Catalog Number: CL594-FcA98284



Basic Information

Catalog Number: CL594-FcA98284	GenBank Accession Number: NM_001310438.1	Purification Method: Protein A purification
Concentration: 100ug, 500 ug/ml	GeneID (NCBI): 546644	CloneNo.: 242141B11
Source: Rabbit	UNIPROT ID: P35461	Recommended Dilutions: FC: 0.25 ug per 10 ⁶ cells in a 100 µl suspension
Isotype: IgG	Full Name: lymphocyte antigen 6 complex, locus G	Excitation/Emission maxima wavelengths: 588 nm / 604 nm
Immunogen Catalog Number: EG2609	Calculated MW: 14 kDa	

Applications

Tested Applications: FC	Positive Controls: FC : mouse bone marrow cells,
Species Specificity: mouse	

Background Information

Ly-6G (lymphocyte antigen 6 complex, locus G), also known as Gr-1, is a 21-25 kDa, glycosylphosphatidylinositol-anchored protein expressed on myeloid lineage cells in mouse bone marrow (PMID: 8360469). The expression of Ly-6G increases on neutrophils as they differentiate from immature cells in the bone marrow to mature cells in the blood and spleen (PMID: 8890901). This antibody specifically recognizes Ly-6G, but not Ly-6C.

Storage

Storage:
Store at 2-8°C. Avoid exposure to light. Stable for one year after shipment.
Storage Buffer:
PBS with 0.09% sodium azide, pH7.3

For technical support and original validation data for this product please contact:

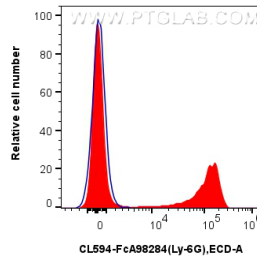
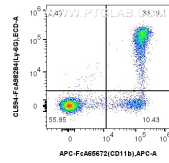
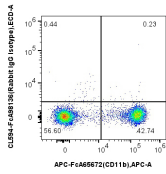
T: 4006900926

E: Proteintech-CN@ptglab.com

W: ptgcn.com

This product is exclusively available under Proteintech Group brand and is not available to purchase from any other manufacturer.

Selected Validation Data



1x10⁶ mouse bone marrow cells were surface stained with FcZero-rAb™ APC Anti-Mouse CD11b, and 0.25 ug CoraLite® Plus 594 Anti-Mouse Ly-6G Rabbit RecAb (CL594-FcA98284, Clone: 242141B11) or 0.25 ug CoraLite®594 Rabbit IgG Isotype Control RecAb (CL594-FcA98136, Clone: 240953C9). Cells were not fixed.

1x10⁶ mouse bone marrow cells were surface stained with 0.25 ug CoraLite® Plus 594 Anti-Mouse Ly-6G Rabbit RecAb (CL594-FcA98284, Clone: 242141B11) (red) or 0.25 ug CoraLite®594 Rabbit IgG Isotype Control RecAb (CL594-FcA98136, Clone: 240953C9) (blue). Cells were not fixed.

