

For Research Use Only

FcZero-rAb™ CoraLite® Plus 594 Anti-Human CD16 (3G8) Rabbit IgG Recombinant Antibody

Catalog Number: CL594-FcA65612



Basic Information

Catalog Number:

CL594-FcA65612

Concentration:

100 tests, 5 µl/test

Source:

Rabbit

Isotype:

IgG

GenBank Accession Number:

BC017865

GeneID (NCBI):

2214

ENSEMBL Gene ID:

ENSG00000203747

UNIPROT ID:

P08637

Full Name:

Fc fragment of IgG, low affinity IIIa, receptor (CD16a)

Calculated MW:

254 aa, 29 kDa

Purification Method:

Protein A purification

CloneNo.:

3G8

Recommended Dilutions:

FC: 5 µl per 10⁶ cells in a 100 µl suspension

Excitation/Emission maxima wavelengths:

588 nm / 604 nm

Applications

Tested Applications:

FC

Species Specificity:

human, monkey, non-human primates

Positive Controls:

FC : human PBMCs,

Background Information

CD16 is a 50-70-kDa low affinity Fc receptor found on the surface of natural killer cells, neutrophil polymorphonuclear leukocytes, monocytes and macrophages. CD16 mediates antibody-dependent cellular cytotoxicity (ADCC) and other antibody-dependent responses, such as phagocytosis. CD16 has been identified as Fc receptors FcγRIIIa (CD16a) and FcγRIIIb (CD16b), encoded by two nearly identical genes, FCGR3A and the FCGR3B. Clone 3G8 recognizes both the CD16a and CD16b (PMID: 7592758).

Storage

Storage:

Store at 2-8°C. Avoid exposure to light. Stable for one year after shipment.

Storage Buffer:

PBS with 0.09% sodium azide and 0.5% BSA, pH7.3

For technical support and original validation data for this product please contact:

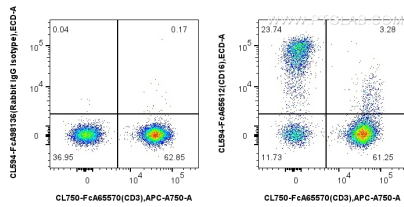
T: 4006900926

E: Proteintech-CN@ptglab.com

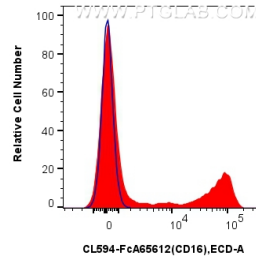
W: ptgcn.com

This product is exclusively available under Proteintech Group brand and is not available to purchase from any other manufacturer.

Selected Validation Data



1x10⁶ human PBMCs were surface stained with FcZero-rAb™ CoraLite® Plus 750 Anti-Human CD3 (UCHT1), and 5 ul CoraLite® Plus 594 Anti-Human CD16 (3G8) Rabbit IgG RecAb (CL594-FcA65612, Clone:3G8) or CoraLite®594 Rabbit IgG Isotype Control RecAb (CL594-FcA98136, Clone: 240953C9). Cells were not fixed.



1x10⁶ human PBMCs were surface stained with 5 ul CoraLite® Plus 594 Anti-Human CD16 (3G8) Rabbit IgG RecAb (CL594-FcA65612, Clone:3G8) (red) or CoraLite®594 Rabbit IgG Isotype Control RecAb (CL594-FcA98136, Clone: 240953C9) (blue). Cells were not fixed.