

For Research Use Only

CoraLite®594 Anti-Mouse CD38 Rabbit Recombinant Antibody

Catalog Number:CL594-98433-3



Basic Information

Catalog Number:

CL594-98433-3

Concentration:

100ug, 500 ug/ml

Source:

Rabbit

Isotype:

IgG

Immunogen Catalog Number:

EG2915

GenBank Accession Number:

NM_007646.5

GeneID (NCBI):

12494

UNIPROT ID:

P56528

Full Name:

CD38 antigen

Calculated MW:

34 kDa

Purification Method:

Protein A purification

CloneNo.:

250107D11

Recommended Dilutions:

FC: 0.25 ug per 10⁶ cells in a 100 µl suspension

Excitation/Emission maxima wavelengths:

588 nm / 604 nm

Applications

Tested Applications:

FC

Species Specificity:

mouse

Positive Controls:

FC : mouse splenocytes,

Background Information

CD38, also known as ADP-ribosyl cyclase 1, is a type II transmembrane glycoprotein with a short N-terminal cytoplasmic tail, a single membrane-spanning domain, and a C-terminal extracellular region with four N-glycosylation sites (PMID: 2319135). The extracellular domain of CD38 has bifunctional enzyme activities that catalyze synthesis of cyclic ADP ribose from nicotinamide adenine dinucleotide (NAD) and hydrolysis of cyclic ADP ribose to adenosine diphosphoribose (PMID: 10636863). CD38 is expressed on a variety of hematopoietic and non-hematopoietic cells and is involved in diverse processes such as generation of calcium-mobilizing metabolites, cell activation, and chemotaxis (PMID: 25938500).

Storage

Storage:

Store at 2-8°C. Avoid exposure to light. Stable for one year after shipment.

Storage Buffer:

PBS with 0.09% sodium azide, pH7.3

For technical support and original validation data for this product please contact:

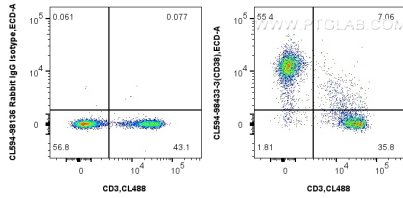
T: 4006900926

E: Proteintech-CN@ptglab.com

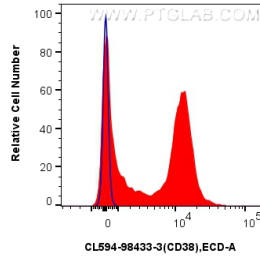
W: ptgcn.com

This product is exclusively available under Proteintech Group brand and is not available to purchase from any other manufacturer.

Selected Validation Data



1x10⁶ mouse splenocytes were surface stained with CoraLite® Plus 488 Anti-Mouse CD3, and 0.25 ug CoraLite®594 Anti-Mouse CD38 Rabbit RecAb (CL594-98433-3, Clone: 250107D11) or CoraLite®594 Rabbit IgG Isotype Control RecAb (CL594-98136, Clone: 240953C9). Cells were not fixed.



1x10⁶ mouse splenocytes were surface stained with 0.25 ug CoraLite®594 Anti-Mouse CD38 Rabbit RecAb (CL594-98433-3, Clone: 250107D11) (red) or CoraLite®594 Rabbit IgG Isotype Control RecAb (CL594-98136, Clone: 240953C9) (blue). Cells were not fixed.