

For Research Use Only

CoraLite®594 Anti-Human Glycophorin A/CD235a Rabbit Recombinant Antibody

Catalog Number: CL594-98370-2



Basic Information

Catalog Number:

CL594-98370-2

Concentration:

100tests, 5 ul/test

Source:

Rabbit

Isotype:

IgG

Immunogen Catalog Number:

EG2336

GenBank Accession Number:

BC005319

GeneID (NCBI):

2993

UNIPROT ID:

P02724

Full Name:

glycophorin A (MNS blood group)

Calculated MW:

150 aa, 16 kDa

Purification Method:

Protein A purification

CloneNo.:

242822E1

Recommended Dilutions:

FC: 5 ul per 10⁶ cells in a 100 µl suspension

Excitation/Emission maxima wavelengths:

588 nm / 604 nm

Applications

Tested Applications:

FC

Species Specificity:

human

Positive Controls:

FC : Human peripheral blood erythrocytes,

Background Information

Glycophorin A (GYPA) is the major transmembrane sialoglycoprotein in erythrocytes. It is a dimeric type I transmembrane protein carrying 15 closely clustered O-linked tetrasaccharides capped with sialic acid/N-acetylneuraminic acid (Neu5Ac). This 36 kDa protein represents the major sialoglycoprotein of the red blood cell membrane displaying about one million copies per cell. (PMID: 9490702)

Storage

Storage:

Store at 2-8°C. Avoid exposure to light. Stable for one year after shipment.

Storage Buffer:

PBS with 0.09% sodium azide and 0.5% BSA, pH7.3

For technical support and original validation data for this product please contact:

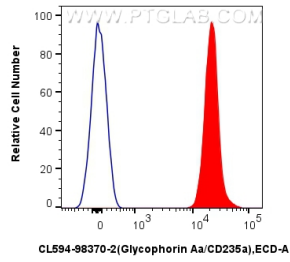
T: 4006900926

E: Proteintech-CN@ptglab.com

W: ptgcn.com

This product is exclusively available under Proteintech Group brand and is not available to purchase from any other manufacturer.

Selected Validation Data



1x10⁶ Human peripheral blood erythrocytes were surface stained with 5 ul CoraLite®594 Anti-Human Glycophorin A/CD235a Rabbit RecAb (CL594-98370-2, Clone: 242822E1) (red) or CoraLite®594 Rabbit IgG Isotype Control RecAb (CL594-98136, Clone: 240953C9) (blue). Cells were not fixed.