

For Research Use Only

CoraLite®594 Anti-Human IL-10RB Rabbit Recombinant Antibody

Catalog Number:CL594-98292



Basic Information

Catalog Number:

CL594-98292

Concentration:

100tests, 5 ul/test

Source:

Rabbit

Isotype:

IgG

Immunogen Catalog Number:

EG3446

GenBank Accession Number:

BC001903

GeneID (NCBI):

3588

UNIPROT ID:

Q08334

Full Name:

interleukin 10 receptor, beta

Calculated MW:

37 kDa

Purification Method:

Protein A purification

CloneNo.:

242302D2

Recommended Dilutions:

FC: 5 ul per 10⁶ cells in a 100 µl suspension

Excitation/Emission maxima wavelengths:

588 nm / 604 nm

Applications

Tested Applications:

FC

Species Specificity:

human

Positive Controls:

FC : human PBMCs,

Background Information

Interleukin-10 (IL-10) is an anti-inflammatory cytokine that plays a critical role in maintaining immune system balance. IL-10 signals through a receptor complex consisting of two molecules of the IL-10R alpha-chain (IL-10RA) and two molecules of the accessory IL-10R beta-chain (IL-10RB) (PMID: 22236434). IL-10RA and IL-10RB are members of the type II cytokine receptor family. IL-10RB, also known as IL-10R2 or CDw210b, is the signaling subunit of the IL-10R complex and is constitutively expressed in a variety of cell types (PMID: 24507158). Binding of IL-10 to the IL-10R complex leads to JAK1- and TYK2-mediated phosphorylation of STAT3 (PMID: 11244051; 10433356). IL-10RB is also shared by several other cytokines, including IL22, IL-26, IFN- γ , IL-28A/B and IL29 (PMID: 22236434).

Storage

Storage:

Store at 2-8°C. Avoid exposure to light. Stable for one year after shipment.

Storage Buffer:

PBS with 0.09% sodium azide and 0.5% BSA, pH7.3

For technical support and original validation data for this product please contact:

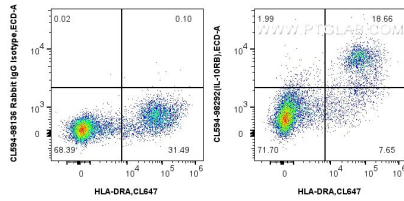
T: 4006900926

E: Proteintech-CN@ptglab.com

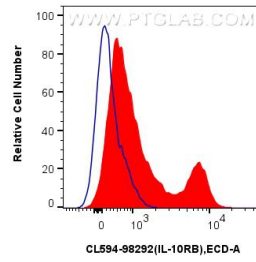
W: ptgcn.com

This product is exclusively available under Proteintech Group brand and is not available to purchase from any other manufacturer.

Selected Validation Data



1x10⁶ human PBMCs were surface stained with CoraLite® Plus 647 Anti-Human HLA-DR (L243) Mouse IgG2a Recombinant Antibody (CL647-65560, Clone: L243), and 5 ul CoraLite®594 Anti-Human IL-10RB Rabbit RecAb (CL594-98292, Clone: 242302D2) or CoraLite®594 Rabbit IgG Isotype Control RecAb (CL594-98136, Clone: 240953C9). Cells were incubated with FC Receptor Block prior to staining. Cells were not fixed.



1x10⁶ human PBMCs were surface stained with 5 ul CoraLite®594 Anti-Human IL-10RB Rabbit RecAb (CL594-98292, Clone: 242302D2) (red) or CoraLite®594 Rabbit IgG Isotype Control RecAb (CL594-98136, Clone: 240953C9) (blue). Cells were incubated with FC Receptor Block prior to staining. Cells were not fixed.