

For Research Use Only

CoraLite®594 Anti-Human SIRP beta 1/CD172b Rabbit Recombinant Antibody

Catalog Number: CL594-98267



Basic Information

Catalog Number:

CL594-98267

Concentration:

100tests, 5 ul/test

Source:

Rabbit

Isotype:

IgG

Immunogen Catalog Number:

EG1668

GenBank Accession Number:

NM_006065.5

GeneID (NCBI):

10326

UNIPROT ID:

O00241-1

Full Name:

signal-regulatory protein beta 1

Calculated MW:

43kDa

Purification Method:

Protein A purification

CloneNo.:

242115C10

Recommended Dilutions:

FC: 5 ul per 10⁶ cells in a 100 µl suspension

Excitation/Emission maxima wavelengths:

588 nm / 604 nm

Applications

Tested Applications:

FC

Species Specificity:

human

Positive Controls:

FC : human peripheral blood leukocytes,

Background Information

SIRP beta 1, also known as CD172b, is a member of the signal-regulatory-protein (SIRP) family and also belongs to the immunoglobulin superfamily. SIRP family members are cell surface signaling receptors differentially expressed in leukocytes and the central nervous system. SIRP beta 1 interacts with TYROBP/DAP12, a protein-bearing immunoreceptor tyrosine-based activation motif. SIRP beta 1 also participates in the recruitment of tyrosine kinase SYK.

Storage

Storage:

Store at 2-8°C. Avoid exposure to light. Stable for one year after shipment.

Storage Buffer:

PBS with 0.09% sodium azide and 0.5% BSA, pH7.3

For technical support and original validation data for this product please contact:

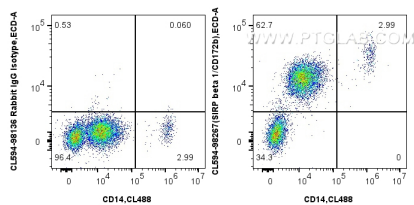
T: 4006900926

E: Proteintech-CN@ptglab.com

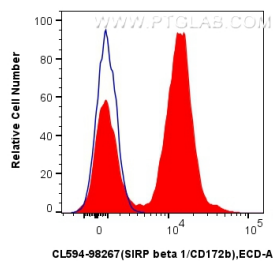
W: ptgcn.com

This product is exclusively available under Proteintech Group brand and is not available to purchase from any other manufacturer.

Selected Validation Data



1x10⁶ human peripheral blood leukocytes were surface stained with CoraLite® Plus 488 Anti-Human CD14, and 5 ul CoraLite®594 Anti-Human SIRP beta 1/CD172b Rabbit RecAb (CL594-98267, Clone: 242115C10) or CoraLite®594 Rabbit IgG Isotype Control RecAb (CL594-98136, Clone: 240953C9). Cells were incubated with FC Receptor Block prior to staining. Cells were not fixed.



1x10⁶ human peripheral blood leukocytes were surface stained with 5 ul CoraLite®594 Anti-Human SIRP beta 1/CD172b Rabbit RecAb (CL594-98267, Clone: 242115C10) (red) or CoraLite®594 Rabbit IgG Isotype Control RecAb (CL594-98136, Clone: 240953C9) (blue). Cells were incubated with FC Receptor Block prior to staining. Cells were not fixed.