

# CoraLite®594 Anti-Human CD107a / LAMP1 Rabbit Recombinant Antibody

Catalog Number: CL594-98266-2

## Basic Information

**Catalog Number:**

CL594-98266-2

**Concentration:**

100 tests, 5 µl/test

**Source:**

Rabbit

**Isotype:**

IgG

**Immunogen Catalog Number:**

EG2611

**GenBank Accession Number:**

NM\_005561.4

**GeneID (NCBI):**

3916

**ENSEMBL Gene ID:**

ENSG00000185896

**UNIPROT ID:**

P11279-1

**Full Name:**

lysosomal-associated membrane protein 1

**Calculated MW:**

45 kDa

**Purification Method:**

Protein A purification

**CloneNo.:**

242116E8

**Recommended Dilutions:**

IF/ICC: 1:50-1:500

FC (Intra): 5 µl per 10<sup>6</sup> cells in a 100 µl suspension

**Excitation/Emission maxima wavelengths:**

588 nm / 604 nm

## Applications

**Tested Applications:**

IF/ICC, FC (Intra)

**Species Specificity:**

human

**Positive Controls:**

IF/ICC : HepG2 cells,

FC (Intra) : Jurkat cells,

## Background Information

LAMP1 (CD107a) is a heavily glycosylated membrane protein enriched in the lysosomal membrane. LAMP1 is extensively glycosylated with asparagine-linked oligosaccharides which protect it from intracellular proteolysis (PMID: 10521503). Although LAMP1 is expressed largely in the endosome-lysosomal membrane of cells, it is also found on the plasma membrane (PMID: 16168398). Elevated LAMP1 expression at the cell surface has also been detected during platelet and granulocytic cell activation, as well as in some tumor cells (PMID: 29085473). LAMP1 functions to provide selectins with carbohydrate ligands. This protein has also been shown to be a marker of degranulation on lymphocytes such as CD8<sup>+</sup> and NK cells and may also play a role in tumor cell differentiation and metastasis (PMID: 18835598; 29085473; 9426697).

## Storage

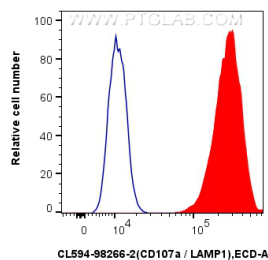
**Storage:**

Store at 2-8°C. Avoid exposure to light. Stable for one year after shipment.

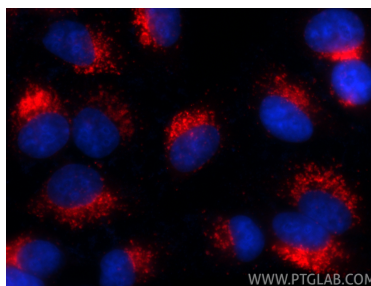
**Storage Buffer:**

PBS with 0.09% sodium azide and 0.5% BSA, pH7.3

## Selected Validation Data



$1 \times 10^6$  Jurkat cells were intracellularly stained with 5  $\mu$ l CoraLite® 594 Anti-Human CD107a / LAMP1 Rabbit RecAb (CL594-98266-2, Clone: 242116E8)(red) or CoraLite® 594 Rabbit IgG Isotype Control RecAb (CL594-98136, Clone: 240953C9) (blue). Cells were fixed with 4% PFA and permeabilized with Flow Cytometry Perm Buffer (PF00011-C).



Immunofluorescent analysis of (-20°C Ethanol) fixed HepG2 cells using CoraLite® 594 CD107a / LAMP1 antibody (CL594-98266-2, Clone: 242116E8) at dilution of 1:200.