

For Research Use Only

# CoraLite®594 Anti-Human CD16b Rabbit Recombinant Antibody

Catalog Number:CL594-98192



## Basic Information

Catalog Number:

CL594-98192

Concentration:

100tests, 5 ul/test

Source:

Rabbit

Isotype:

IgG

Immunogen Catalog Number:

EG2487

GenBank Accession Number:

GeneID (NCBI):

2215

Full Name:

Fc fragment of IgG, low affinity IIIb, receptor (CD16b)

Purification Method:

Protein A purification

CloneNo.:

241713E3

Recommended Dilutions:

FC: 5 ul per 10<sup>6</sup> cells in a 100 µl suspension

Excitation/Emission maxima wavelengths:

588 nm / 604 nm

## Applications

Tested Applications:

FC

Species Specificity:

human

Positive Controls:

FC : human peripheral blood leukocytes,

## Background Information

CD16 is a low affinity Fc receptor. It has been identified as Fc receptors Fc $\gamma$  RIIIa (CD16a) and Fc $\gamma$  RIIIb (CD16b), encoded by two nearly identical genes, FCGR3A and FCGR3B. In humans, Fc $\gamma$  RIIIa/CD16a is a type I transmembrane receptor expressed on macrophages and NK cells. Fc $\gamma$  RIIIb/CD16b is a GPI-linked Fc-receptor highly expressed on neutrophils. The two proteins differ by only four amino acid residues in the mature proteins (PMID: 30361439).

## Storage

Storage:

Store at 2-8°C. Avoid exposure to light. Stable for one year after shipment.

Storage Buffer:

PBS with 0.09% sodium azide and 0.5% BSA, pH7.3

For technical support and original validation data for this product please contact:

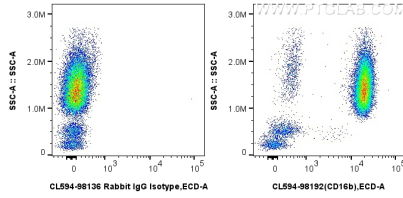
T: 4006900926

E: [Proteintech-CN@ptglab.com](mailto:Proteintech-CN@ptglab.com)

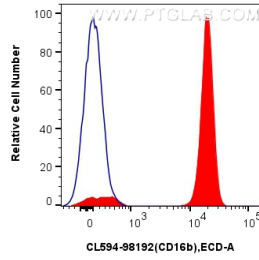
W: [ptgcn.com](http://ptgcn.com)

**This product is exclusively available under Proteintech Group brand and is not available to purchase from any other manufacturer.**

## Selected Validation Data



1x10<sup>6</sup> human peripheral blood leukocytes were surface stained with 5 ul CoraLite®594 Anti-Human CD16b Rabbit RecAb (CL594-98192, Clone: 241713E3) or CoraLite®594 Rabbit IgG Isotype Control RecAb (CL594-98136, Clone: 240953C9). Cells were incubated with FC Receptor Block prior to staining. Cells were not fixed.



1x10<sup>6</sup> human peripheral blood leukocytes were surface stained with 5 ul CoraLite®594 Anti-Human CD16b Rabbit RecAb (CL594-98192, Clone: 241713E3) (red) or CoraLite®594 Rabbit IgG Isotype Control RecAb (CL594-98136, Clone: 240953C9) (blue). Cells were incubated with FC Receptor Block prior to staining. Cells were not fixed.