

For Research Use Only

CoraLite®594 Anti-Human CD34 Rabbit Recombinant Antibody

Catalog Number: CL594-98145-4



Basic Information

Catalog Number:

CL594-98145-4

Concentration:

100 tests, 5 µl/test

Source:

Rabbit

Isotype:

IgG

GenBank Accession Number:

BC039146

GeneID (NCBI):

947

UNIPROT ID:

P28906

Full Name:

CD34 molecule

Calculated MW:

41 kDa

Purification Method:

Protein A purification

CloneNo.:

242069A6

Excitation/Emission maxima wavelengths:

588 nm / 604 nm

Applications

Tested Applications:

FC

Species Specificity:

human

Positive Controls:

FC : human PBMCs,

Background Information

CD34 is a 105- to 120-kDa glycoprophosphoprotein expressed on the majority of hematopoietic stem/progenitor cells, bone marrow stromal cells, capillary endothelial cells, embryonic fibroblasts, and some nerve tissue. CD34 is a commonly used marker for identifying human hematopoietic stem/progenitor cells and mediates cell adhesion and lymphocyte homing by binding L-selectin and E-selectin ligands. CD34 is also one of the best negative selection markers for characterizing and/or isolating human MSCs from bone marrow and other sources. Along with other positive selection markers (such as CD29, CD44, CD90, CD105 and CD166), negative selection markers (such as CD34 and CD45) are used for MSC identification.

Storage

Storage:

Store at 2-8°C. Avoid exposure to light. Stable for one year after shipment.

Storage Buffer:

PBS with 0.09% sodium azide and 0.5% BSA, pH7.3

For technical support and original validation data for this product please contact:

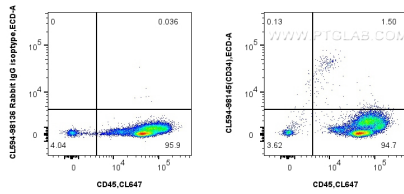
T: 4006900926

E: Proteintech-CN@ptglab.com

W: ptgcn.com

This product is exclusively available under Proteintech Group brand and is not available to purchase from any other manufacturer.

Selected Validation Data



1x10⁶ human PBMCs were surface stained with 5 ul CoraLite®594 Anti-Human CD34 Rabbit RecAb (CL594-98145-4, Clone: 242069A6) or CoraLite®594 Rabbit IgG Isotype Control RecAb (CL594-98136, Clone: 240953C9). Cells were co-stained with CoraLite® Plus 647 Anti-Human CD45 Rabbit Recombinant Antibody (CL647-98117, Clone: 241670E10). Cells were incubated with FC Receptor Block prior to staining. Cells were not fixed.