

For Research Use Only

CoraLite®594 Anti-Mouse CD40 Rabbit Recombinant Antibody

Catalog Number: CL594-98122



Basic Information

Catalog Number:

CL594-98122

Concentration:

100ug, 500 µg/ml

Source:

Rabbit

Isotype:

IgG

Immunogen Catalog Number:

EG1118

GenBank Accession Number:

NM_011611.2

GeneID (NCBI):

21939

UNIPROT ID:

P27512-1

Full Name:

CD40 antigen

Calculated MW:

32 kDa

Purification Method:

Protein A purification

CloneNo.:

240874G8

Excitation/Emission maxima wavelengths:

588 nm / 604 nm

Applications

Tested Applications:

FC

Species Specificity:

mouse

Background Information

CD40, also named as TNFRSF5 and Bp50, is a type I transmembrane protein that belongs to the tumor necrosis factor-R (TNF-R) family (PMID: 10647992). CD40 is expressed on B cells, dendritic cells (DCs), monocytes, platelets, and macrophages as well as by non-hematopoietic cells such as myofibroblasts, fibroblasts, epithelial, and endothelial cells (PMID: 19426221). It is a receptor for TNFSF5/CD40LG. CD40L/CD40 interactions are essential for immunoglobulin (Ig) isotype switching, germinal center formation and the development of B cell memory (PMID: 7516405; 11675497).

Storage

Storage:

Store at 2-8°C. Avoid exposure to light. Stable for one year after shipment.

Storage Buffer:

PBS with 0.09% sodium azide, pH7.3

For technical support and original validation data for this product please contact:

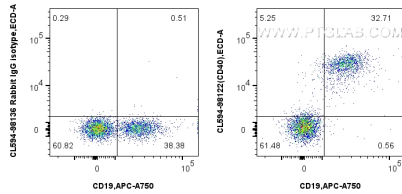
T: 4006900926

E: Proteintech-CN@ptglab.com

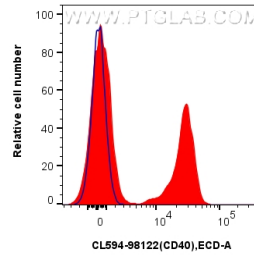
W: ptgcn.com

This product is exclusively available under Proteintech Group brand and is not available to purchase from any other manufacturer.

Selected Validation Data



1x10⁶ mouse splenocytes were surface stained with 0.25 ug CoraLite® Plus 750 Anti-Mouse CD19 (1D3) (CL750-65290, Clone: 1D3), and 0.25 ug CoraLite®594 Anti-Mouse CD40 Rabbit RecAb (CL594-98122, Clone: 240874G8) or 0.25 ug CoraLite®594 Rabbit IgG Isotype Control RecAb (CL594-98136, Clone: 240953C9). Cells were not fixed.



1x10⁶ mouse splenocytes were surface stained with 0.25 ug CoraLite®594 Anti-Mouse CD40 Rabbit RecAb (CL594-98122, Clone: 240874G8) (red) or 0.25 ug CoraLite®594 Rabbit IgG Isotype Control RecAb (CL594-98136, Clone: 240953C9) (blue). Cells were not fixed.