

For Research Use Only

CoraLite®594 Anti-Mouse NCAM1/CD56 Rabbit Recombinant Antibody

Catalog Number: CL594-98118



Basic Information

Catalog Number: CL594-98118	GenBank Accession Number: GeneID (NCBI): 17967	Purification Method: Protein A purification
Concentration: 100ug, 500 ug/ml	UNIPROT ID: P13595-1	CloneNo.: 240936A4
Source: Rabbit	Full Name: neural cell adhesion molecule 1	Recommended Dilutions: FC: 0.25 ug per 10 ⁶ cells in a 100 µl suspension
Isotype: IgG	Calculated MW: 119 kDa	Excitation/Emission maxima wavelengths: 588 nm / 604 nm
Immunogen Catalog Number: EG0652		

Applications

Tested Applications: FC	Positive Controls: FC : mouse bone marrow cells,
Species Specificity: mouse	

Background Information

Neural cell adhesion molecule 1 (NCAM1, also known as CD56, NCAM, and MSK39) is a membrane-bound cell surface glycoprotein and a member of the immunoglobulin supergene family, which induces cell-to-cell interactions during embryonic development, cell migration, and organogenesis (PMID: 8013635; 1855476; 1391354). Mouse natural killer (NK) cells do not express the murine homolog of CD56 (PMID: 17100875). The molecular weight of NCAM1 changes from the 120 kDa isoform in normal tissue to the 140/180 kDa isoforms in tumors (PMID: 10086383).

Storage

Storage:
Store at 2-8°C. Avoid exposure to light. Stable for one year after shipment.
Storage Buffer:
PBS with 0.09% sodium azide, pH7.3

For technical support and original validation data for this product please contact:

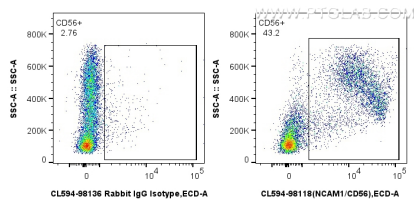
T: 4006900926

E: Proteintech-CN@ptglab.com

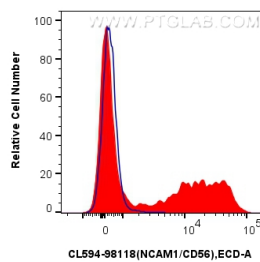
W: ptgcn.com

This product is exclusively available under Proteintech Group brand and is not available to purchase from any other manufacturer.

Selected Validation Data



1x10⁶ mouse bone marrow cells were surface stained with 0.25 ug CoraLite®594 Anti-Mouse NCAM1/CD56 Rabbit RecAb (CL594-98118, Clone:240936A4)(red), or 0.25 ug CoraLite®594 Rabbit IgG Isotype Control RecAb (CL594-98136, Clone: 240953C9) (blue). Cells were not fixed.



1x10⁶ mouse bone marrow cells were surface stained with 0.25 ug CoraLite®594 Anti-Mouse NCAM1/CD56 Rabbit RecAb (CL594-98118, Clone:240936A4) (red), or 0.25 ug CoraLite®594 Rabbit IgG Isotype Control RecAb (CL594-98136, Clone: 240953C9) (blue). Cells were not fixed.