

For Research Use Only

CoraLite®594 Anti-Human CD39/ENTPD1 Rabbit Recombinant Antibody

Catalog Number: CL594-98102



Basic Information

Catalog Number:

CL594-98102

Concentration:

100tests, 5 ul/test

Source:

Rabbit

Isotype:

IgG

GenBank Accession Number:

BC047664

GeneID (NCBI):

953

UNIPROT ID:

P49961

Full Name:

ectonucleoside triphosphate
diphosphohydrolase 1

Calculated MW:

58 kDa

Purification Method:

Protein A purification

CloneNo.:

241292G7

Excitation/Emission maxima
wavelengths:

588 nm / 604 nm

Applications

Tested Applications:

FC

Species Specificity:

human

Background Information

ENTPD1 (Ectonucleoside triphosphate diphosphohydrolase 1) is also named CD39, NTPDase 1, and Ecto-ATPDase 1 and belongs to the GDA1/CD39 NTPase family. In the nervous system, it can hydrolyze ATP and other nucleotides to regulate purinergic neurotransmission. It is a noncovalent tetrameric protein and detergent inhibition of enzymatic activity is caused by dissociation of ectoapyrase tetramers into monomers (PMID: 9733785).

Storage

Storage:

Store at 2-8°C. Avoid exposure to light. Stable for one year after shipment.

Storage Buffer:

PBS with 0.09% sodium azide and 0.5% BSA.

For technical support and original validation data for this product please contact:

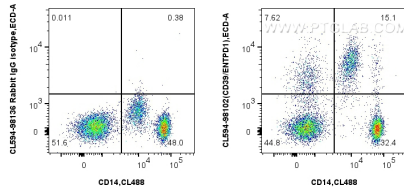
T: 4006900926

E: Proteintech-CN@ptglab.com

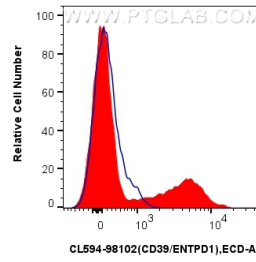
W: ptgcn.com

This product is exclusively available under Proteintech Group brand and is not available to purchase from any other manufacturer.

Selected Validation Data



1x10⁶ human PBMCs were surface stained with CoraLite® Plus 488 Anti-Human CD4 and 5 ul CoraLite® 594 Anti-Human CD39/ENTPD1 Rabbit RecAb (CL594-98102, Clone: 241292G7) or CoraLite® 594 Rabbit IgG Isotype Control RecAb (CL594-98136, Clone: 240953C9). Cells were incubated with FC Receptor Block prior to staining. Cells were not fixed.



1x10⁶ human PBMCs were surface stained with 5 ul CoraLite® 594 Anti-Human CD39/ENTPD1 Rabbit RecAb (CL594-98102, Clone: 241292G7) (red), or CoraLite® 594 Rabbit IgG Isotype Control RecAb (CL594-98136, Clone: 240953C9) (blue). Cells were incubated with FC Receptor Block prior to staining. Cells were not fixed.