

For Research Use Only

# CoraLite®594 Anti-Human IL-6 Rabbit Recombinant Antibody

Catalog Number: CL594-98087



## Basic Information

Catalog Number:

CL594-98087

Concentration:

100 tests, 5 µl/test

Source:

Rabbit

Isotype:

IgG

GenBank Accession Number:

BC015511

GeneID (NCBI):

3569

ENSEMBL Gene ID:

ENSG00000136244

UNIPROT ID:

P05231

Full Name:

interleukin 6 (interferon, beta 2)

Calculated MW:

212 aa, 24 kDa

Purification Method:

Protein A purification

CloneNo.:

240670D12

Excitation/Emission maxima wavelengths:

588 nm / 604 nm

## Applications

Tested Applications:

FC (Intra)

Species Specificity:

human

## Background Information

Interleukin-6 (IL-6) is an interleukin that acts as both a pro-inflammatory and anti-inflammatory cytokine. IL-6 protein is secreted by a variety of cell types including T cells and macrophages as phosphorylated and variably glycosylated molecule. IL-6 plays an essential role in the final differentiation of B-cells into Ig-secreting cells involved in lymphocyte and monocyte differentiation. It induces myeloma and plasmacytoma growth and induces nerve cells differentiation. Acts on B-cells, T-cells, hepatocytes, hematopoietic progenitor cells and cells of the CNS. IL-6 is also considered a myokine, a cytokine produced from muscle, and is elevated in response to muscle contraction. IL-6 has been shown to interact with interleukin-6 receptor and glycoprotein 130. Additionally, IL-6 is involved in hematopoiesis, bone metabolism, and cancer progression, and has been defined an essential role in directing transition from innate to acquired immunity.

## Storage

Storage:

Store at 2-8°C. Avoid exposure to light. Stable for one year after shipment.

Storage Buffer:

PBS with 0.09% sodium azide and 0.5% BSA

For technical support and original validation data for this product please contact:

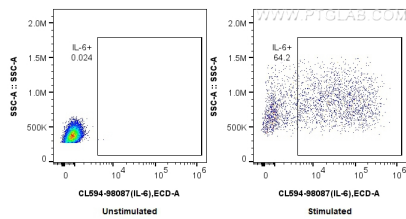
T: 4006900926

E: [Proteintech-CN@ptglab.com](mailto:Proteintech-CN@ptglab.com)

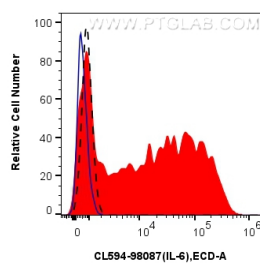
W: [ptgcn.com](http://ptgcn.com)

This product is exclusively available under Proteintech Group brand and is not available to purchase from any other manufacturer.

## Selected Validation Data



1x10<sup>6</sup> untreated or LPS and Brefeldin A treated human PBMCs were intracellularly stained with 5 ul CoraLite®594 Anti-Human IL-6 Rabbit RecAb (CL594-98087, Clone:240670D12). Cells were fixed with 4% PFA and permeabilized with Flow Cytometry Perm Buffer (PF00011-C). Monocytes were gated.



1x10<sup>6</sup> LPS and Brefeldin A treated human PBMCs were intracellularly stained with 5 ul CoraLite®594 Anti-Human IL-6 Rabbit RecAb (CL594-98087, Clone: 240670D12) (red) or CoraLite®594 Rabbit IgG Isotype Control RecAb (CL594-98136, Clone: 240953C9) (blue). 1x10<sup>6</sup> untreated human PBMCs were intracellularly stained with 5 ul CoraLite®594 Anti-Human IL-6 Rabbit RecAb (CL594-98087, Clone: 240670D12) (black, dashed). Cells were fixed with 4% PFA and permeabilized