

For Research Use Only

CoraLite®594 Anti-Human PD-L1/CD274 Rabbit Recombinant Antibody

Catalog Number: CL594-98062



Basic Information

Catalog Number:

CL594-98062

Concentration:

100 tests, 5 µl/test

Source:

Rabbit

Isotype:

IgG

Immunogen Catalog Number:

EG1114

GenBank Accession Number:

BC074984

GeneID (NCBI):

29126

UNIPROT ID:

Q9NZQ7

Full Name:

CD274 molecule

Calculated MW:

290 aa, 33 kDa

Purification Method:

Protein A purification

CloneNo.:

240721H8

Excitation/Emission maxima wavelengths:

588 nm / 604 nm

Applications

Tested Applications:

FC

Species Specificity:

human

Background Information

Programmed cell death ligand 1 (PD-L1, CD274, or B7-H1), is the first member of B7 family to be discovered. B7 family molecules are type I transmembrane proteins belonging to the immunoglobulin superfamily. In concert with their CD28 family receptors, the B7s are key regulators of the adaptive immune response. PD-L1 is suggested as a negative regulator of T and B cell, and plays important role in mediating tolerance of lymphocytes to self-antigens. It is also involved in the costimulatory signal, essential for T-cell proliferation and production of IL10 and IFNG, in an IL2-dependent and a PD-1-independent manner.

Storage

Storage:

Store at 2-8°C. Avoid exposure to light. Stable for one year after shipment.

Storage Buffer:

PBS with 0.09% sodium azide and 0.5% BSA, pH7.3

For technical support and original validation data for this product please contact:

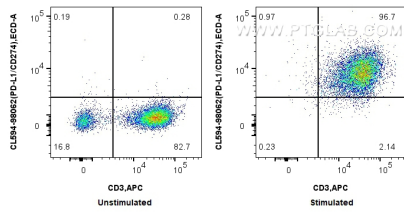
T: 4006900926

E: Proteintech-CN@ptglab.com

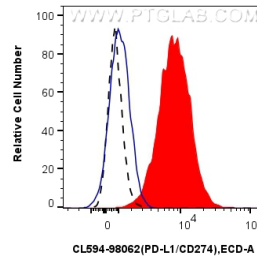
W: ptgcn.com

This product is exclusively available under Proteintech Group brand and is not available to purchase from any other manufacturer.

Selected Validation Data



1x10⁶ untreated or PHA-treated human PBMCs were surface stained with APC Anti-Human CD3 and 5 ul CoraLite®594 Anti-Human PD-L1/CD274 Rabbit RecAb (CL594-98062, Clone: 240721H8). Cells were not fixed.



1x10⁶ PHA-treated human PBMCs were surface stained with 5 ul CoraLite®594 Anti-Human PD-L1/CD274 Rabbit RecAb (CL594-98062, Clone: 240721H8) (red) or CoraLite®594 Rabbit IgG Isotype Control RecAb (CL594-98136, Clone: 240953C9) (blue). Untreated human PBMCs were surface stained with 5 ul CoraLite®594 Anti-Human PD-L1/CD274 Rabbit RecAb (CL594-98062, Clone: 240721H8) (black, dashed). Cells were not fixed.