

For Research Use Only

# CoraLite®594 Anti-Mouse IL-1 alpha Rabbit Recombinant Antibody

Catalog Number: CL594-98052



## Basic Information

<b>Catalog Number:</b> CL594-98052	<b>GenBank Accession Number:</b> NM_010554	<b>Purification Method:</b> Protein A purification
<b>Concentration:</b> 100ug, 500 ug/ml	<b>GeneID (NCBI):</b> 16175	<b>CloneNo.:</b> 240431G10
<b>Source:</b> Rabbit	<b>UNIPROT ID:</b> P01582	<b>Recommended Dilutions:</b> FC (Intra): 0.25 ug per 10 <sup>6</sup> cells in a 100 µl suspension
<b>Isotype:</b> IgG	<b>Full Name:</b> interleukin 1 alpha	<b>Excitation/Emission maxima wavelengths:</b> 588 nm / 604 nm
<b>Immunogen Catalog Number:</b> EG0263	<b>Calculated MW:</b> 31kd	

## Applications

<b>Tested Applications:</b> FC (Intra)	<b>Positive Controls:</b> FC (Intra) : LPS treated RAW 264.7 cells,
<b>Species Specificity:</b> mouse	

## Background Information

IL-1 alpha is a dual function cytokine that can function both as a transcription factor and a damage-associated molecular pattern (DAMP) in innate immune responses. It is expressed by many cell types and its expression is increased when cells are exposed to growth factors, pro-inflammatory, and stress-related signals. In its pro-form, IL-1 alpha contains a nuclear localization signal that allows it to translocate to the nucleus and bind to DNA, resulting in either the increase or prohibition of pro-inflammatory cytokine expression. When cells are exposed to necrotic signals, mature IL-1 alpha is released from the cell lysates and triggers a strong pro-inflammatory response upon binding to its receptor on nearby cells. Due to its strongly pro-inflammatory nature, IL-1 alpha has been linked to tumor metastasis and lower median survival in several cancers (PMID: 27434011, 29247995).

## Storage

**Storage:**  
Store at 2-8°C. Avoid exposure to light. Stable for one year after shipment.  
**Storage Buffer:**  
PBS with 0.09% sodium azide, pH7.3

For technical support and original validation data for this product please contact:

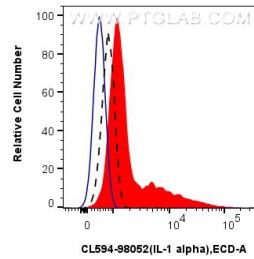
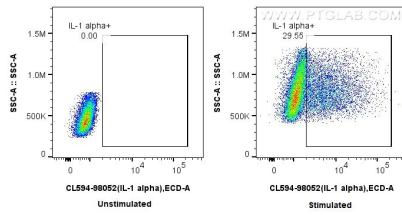
T: 4006900926

E: [Proteintech-CN@ptglab.com](mailto:Proteintech-CN@ptglab.com)

W: [ptgcn.com](http://ptgcn.com)

This product is exclusively available under Proteintech Group brand and is not available to purchase from any other manufacturer.

## Selected Validation Data



1x10<sup>6</sup> untreated or LPS-treated RAW 264.7 cells were intracellularly stained with 0.25 ug CoraLite®594 Anti-Mouse IL-1 alpha Rabbit RecAb (CL594-98052, Clone: 240431G10). Cells were fixed and permeabilized with True-Nuclear Transcription Factor Buffer Set.

1x10<sup>6</sup> LPS-treated RAW 264.7 cells were intracellularly stained with 0.25 ug CoraLite®594 Anti-Mouse IL-1 alpha Rabbit RecAb (CL594-98052, Clone: 240431G10) (red) or 0.25 ug CoraLite®594 Rabbit IgG Isotype Control RecAb (CL594-98136, Clone: 240953C9) (blue). 1x10<sup>6</sup> untreated RAW 264.7 cells were intracellularly stained with 0.25 ug CoraLite®594 Anti-Mouse IL-1 alpha Rabbit RecAb (CL594-98052, Clone: 240431G10)(black, dashed). Cells were fixed

