

For Research Use Only

# CoraLite®594 Anti-Mouse CD5 Rabbit Recombinant Antibody

Catalog Number: CL594-98038-2



## Basic Information

Catalog Number:

CL594-98038-2

Concentration:

100ug, 500 µg/ml

Source:

Rabbit

Isotype:

IgG

GenBank Accession Number:

NM\_007650.3

GeneID (NCBI):

12507

UNIPROT ID:

P13379

Full Name:

CD5 antigen

Calculated MW:

54 kDa

Purification Method:

Protein A purification

CloneNo.:

240244A7

Recommended Dilutions:

FC: 0.25 ug per 10<sup>6</sup> cells in 100 µl suspension

Excitation/Emission maxima wavelengths:

588 nm / 604 nm

## Applications

Tested Applications:

FC

Species Specificity:

mouse

Positive Controls:

FC : mouse splenocytes,

## Background Information

CD5 is a type I transmembrane glycoprotein of the scavenger receptor cysteine-rich family (PMID: 12403363). CD5 is expressed on a majority of thymocytes, mature T cells, B cell subsets, and peripheral blood dendritic cells (PMID: 9858516; 6156984; 10379049; 1384337). CD5 may act as a receptor in regulating T-cell proliferation. It functions as a negative regulator of TCR signaling during thymocyte development (PMID: 7542801).

## Storage

Storage:

Store at 2-8°C. Avoid exposure to light. Stable for one year after shipment.

Storage Buffer:

PBS with 0.09% sodium azide, pH7.3

For technical support and original validation data for this product please contact:

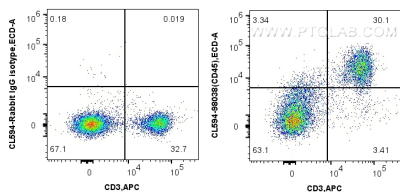
T: 4006900926

E: Proteintech-CN@ptglab.com

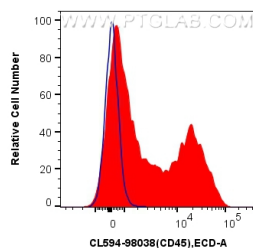
W: ptgcn.com

This product is exclusively available under Proteintech Group brand and is not available to purchase from any other manufacturer.

## Selected Validation Data



1x10<sup>6</sup> mouse splenocytes were surface stained with APC Anti-Mouse CD3 and 0.25 ug CoraLite®594 Anti-Mouse CD5 Rabbit Recombinant Antibody (CL594-98038-2, Clone: 240244A7), or Isotype Control. Cells were not fixed. Lymphocytes were gated.



1x10<sup>6</sup> mouse splenocytes were surface stained with 0.25 ug CoraLite®594 Anti-Mouse CD5 Rabbit Recombinant Antibody (CL594-98038-2, Clone: 240244A7) (red), or Isotype Control (blue). Cells were not fixed.