

# CoraLite®594 Anti-Mouse CD126/IL-6R alpha Rabbit Recombinant Antibody

Catalog Number: CL594-98024

## Basic Information

**Catalog Number:**

CL594-98024

**Size:**

100ug, 500 ug/ml

**Source:**

Rabbit

**Isotype:**

IgG

**GenBank Accession Number:**

NM\_010559.3

**GeneID (NCBI):**

16194

**UNIPROT ID:**

P22272

**Full Name:**

interleukin 6 receptor, alpha

**Calculated MW:**

50KD

**Purification Method:**

Protein A purification

**CloneNo.:**

230371A7

**Excitation/Emission maxima wavelengths:**

588 nm / 604 nm

## Applications

**Tested Applications:**

FC

**Species Specificity:**

mouse

## Background Information

Interleukin-6 (IL-6) is a pleiotropic cytokine produced by a variety of cells during infection, trauma, and immunological challenge (PMID: 8274730). IL-6 acts via a receptor complex consisting of two distinct membrane-bound glycoproteins, an 80-kDa IL-6-binding subunit (IL-6R alpha, CD126, gp80) and a 130-kDa signal-transducing element (gp130, CD130). After binding of IL-6 to membrane-bound IL-6R alpha, the complex of IL-6 and IL-6R alpha associates with gp130, thus activating the receptor (PMID: 9716487). Expression of gp130 is found in almost all organs while expression of IL-6R alpha is predominantly confined to hepatocytes and leukocyte subpopulations (monocytes, neutrophils, T cells, and B cells) (PMID: 11149892).

## Storage

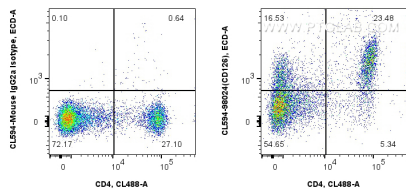
**Storage:**

Store at 2-8°C. Avoid exposure to light. Stable for one year after shipment.

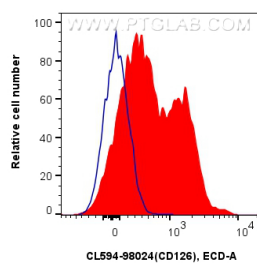
**Storage Buffer:**

PBS with 0.09% sodium azide.

## Selected Validation Data



1x10<sup>6</sup> mouse splenocytes were surface stained with CoraLite® Plus 488 Anti-Mouse CD4 and 0.25 ug CoraLite® 594 Anti-Mouse CD126/IL-6R alpha Rabbit Recombinant Antibody (CL594-98024, Clone: 230371A7), or Isotype Control. Cells were not fixed.



1x10<sup>6</sup> mouse splenocytes were surface stained with 0.25 ug CoraLite® 594 Anti-Mouse CD126/IL-6R alpha Rabbit Recombinant Antibody (CL594-98024, Clone: 230371A7) (red), or Isotype Control (blue). Cells were not fixed.