

For Research Use Only

CoraLite®594 Anti-Human Endoglin/CD105 Rabbit Recombinant Antibody

Catalog Number: CL594-98013



Basic Information

Catalog Number:

CL594-98013

Size:

100tests, 5 ul/test

Source:

Rabbit

Isotype:

IgG

GenBank Accession Number:

BC014271

GeneID (NCBI):

2022

UNIPROT ID:

P17813

Full Name:

endoglin

Calculated MW:

71 kDa

Purification Method:

Protein A purification

CloneNo.:

230047E5

Excitation/Emission maxima
wavelengths:

588 nm / 604 nm

Applications

Tested Applications:

FC

Species Specificity:

human

Background Information

Endoglin (ENG, CD105) is a homodimeric cell membrane glycoprotein of 180 kDa, composed of disulphide-linked subunits of 90-95 kDa. Endoglin is a proliferation-associated and hypoxia-inducible protein mainly expressed on vascular endothelial cells. It acts as an accessory receptor for transforming growth factor beta (TGF- β) and is involved in vascular development and remodeling. The important role of Endoglin in angiogenesis and in tumor progression makes it an ideal target for antiangiogenic therapy and a good marker for tumor prognosis. (PMID: 1326540; 14528280; 21737653; 12773481)

Storage

Storage:

Store at 2-8°C. Avoid exposure to light. Stable for one year after shipment.

Storage Buffer:

PBS with 0.09% sodium azide and 0.5% BSA.

For technical support and original validation data for this product please contact:

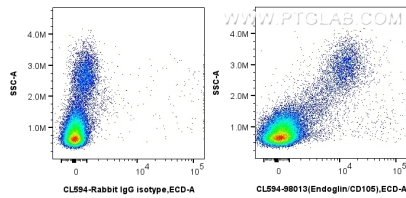
T: 4006900926

E: Proteintech-CN@ptglab.com

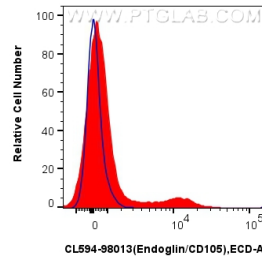
W: ptgcn.com

This product is exclusively available under Proteintech Group brand and is not available to purchase from any other manufacturer.

Selected Validation Data



1x10⁶ human PBMCs were surface stained with 5 ul CoraLite®594 Anti-Human Endoglin/CD105 Rabbit Recombinant Antibody (CL594-98013, Clone:230047E5), or Isotype Control. Cells were incubated with FC Receptor Block prior to staining. Cells were not fixed.



1x10⁶ human PBMCs were surface stained with 5 ul CoraLite®594 Anti-Human Endoglin/CD105 Rabbit Recombinant Antibody (CL594-98013, Clone:230047E5)(red), or Isotype Control (blue). Cells were incubated with FC Receptor Block prior to staining. Cells were not fixed.