

For Research Use Only

CoraLite®594-conjugated ALDH2 Recombinant monoclonal antibody

Catalog Number: CL594-86429-5



Basic Information

Catalog Number:

CL594-86429-5

Source:

Rabbit

Isotype:

IgG

Immunogen Catalog Number:

AG7452

GenBank Accession Number:

BC002967

GeneID (NCBI):

217

UNIPROT ID:

P05091

Full Name:

aldehyde dehydrogenase 2 family
(mitochondrial)

Calculated MW:

56 kDa

Observed MW:

50-55 kDa

Purification Method:

Protein A purification

CloneNo.:

251287E9

Recommended Dilutions:

IF/ICC: 1:50-1:500

Excitation/Emission maxima
wavelengths:

588 nm / 604 nm

Applications

Tested Applications:

IF/ICC

Species Specificity:

human, mouse, rat

Positive Controls:

IF/ICC : C2C12 cells,

Background Information

Acetaldehyde dehydrogenase is the next enzyme after alcohol dehydrogenase in the major pathway of alcohol metabolism. It mediates NADP⁺-dependent oxidation of aldehydes into acids during detoxification of alcohol-derived acetaldehyde; lipid peroxidation; and metabolism of corticosteroids, biogenic amines and neurotransmitters. Genetic variation in ALDH2 is responsible for individual differences in responses to drinking alcohol. Thus, the absence of this enzyme is linked to alcohol intolerance and a reduced risk for alcoholism-related liver disease.

Storage

Storage:

Store at -20°C. Avoid exposure to light. Stable for one year after shipment.

Storage Buffer:

PBS with 50% glycerol, 0.05% Proclin300, 0.5% BSA, pH7.3

Aliquoting is unnecessary for -20°C storage

For technical support and original validation data for this product please contact:

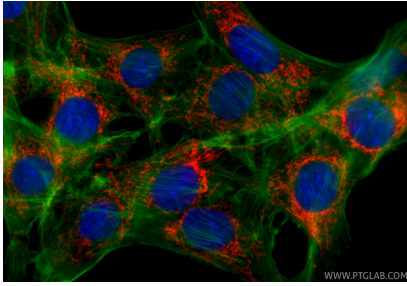
T: 4006900926

E: Proteintech-CN@ptglab.com

W: ptgcn.com

This product is exclusively available under Proteintech Group brand and is not available to purchase from any other manufacturer.

Selected Validation Data



Immunofluorescent analysis of (4% PFA) fixed C2C12 cells using CoraLite®594 ALDH2 antibody (CL594-86429-5, Clone: 251287E9) at dilution of 1:200, CL488-phalloidin (green).