

For Research Use Only

CoraLite®594-conjugated LPP Recombinant monoclonal antibody

Catalog Number:CL594-86117-3



Basic Information

Catalog Number:

CL594-86117-3

Source:

Rabbit

Isotype:

IgG

Immunogen Catalog Number:

AG19205

GenBank Accession Number:

BC130584

GeneID (NCBI):

4026

UNIPROT ID:

Q93052

Full Name:

LIM domain containing preferred translocation partner in lipoma

Calculated MW:

612 aa, 66 kDa

Observed MW:

70-75 kDa

Purification Method:

Protein A purification

CloneNo.:

250773C9

Recommended Dilutions:

IF/ICC: 1:50-1:500

Excitation/Emission maxima wavelengths:

588 nm / 604 nm

Applications

Tested Applications:

IF/ICC

Species Specificity:

human, mouse, rat

Positive Controls:

IF/ICC : A549 cells, HeLa cells

Background Information

LPP is a member of a subfamily of LIM domain proteins. Its characteristic is that the N-terminal region is rich in proline, and it has three C-terminal LIM domains. LPP localizes to the cell periphery in focal adhesions and may be involved in cell-cell adhesion and cell motility (PMID: 10637295). LPP is located at the junction of certain disease-related chromosomal translocations, which result in the expression of chimeric proteins that may promote tumor growth (PMID: 12581855).

Storage

Storage:

Store at -20°C. Avoid exposure to light. Stable for one year after shipment.

Storage Buffer:

PBS with 50% glycerol, 0.05% Proclin300, 0.5% BSA, pH7.3

Aliquoting is unnecessary for -20°C storage

For technical support and original validation data for this product please contact:

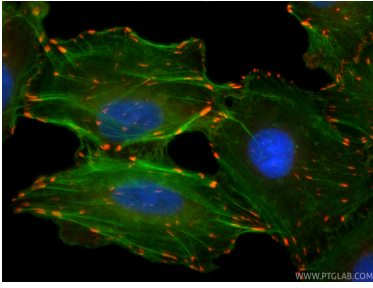
T: 4006900926

E: Proteintech-CN@ptglab.com

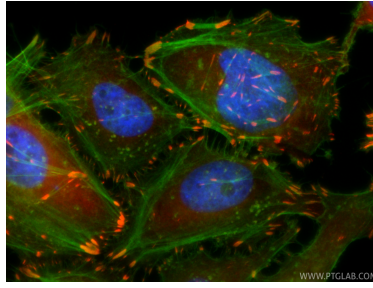
W: ptgcn.com

This product is exclusively available under Proteintech Group brand and is not available to purchase from any other manufacturer.

Selected Validation Data



Immunofluorescent analysis of (4% PFA) fixed A549 cells using CoraLite@594 LPP antibody (CL594-86117-3, Clone: 250773C9) at dilution of 1:200, CL488-phalloidin (green).



Immunofluorescent analysis of (4% PFA) fixed HeLa cells using CoraLite@594 LPP antibody (CL594-86117-3, Clone: 250773C9) at dilution of 1:200, CL488-phalloidin (green).