

For Research Use Only

CoraLite®594-conjugated CDC5L Recombinant monoclonal antibody

Catalog Number: CL594-85788-5



Basic Information

Catalog Number:

CL594-85788-5

Source:

Rabbit

Isotype:

IgG

Immunogen Catalog Number:

AG3578

GenBank Accession Number:

BC001568

GeneID (NCBI):

988

UNIPROT ID:

Q99459

Full Name:

CDC5 cell division cycle 5-like (S. pombe)

Calculated MW:

802 aa, 92 kDa

Purification Method:

Protein A purification

CloneNo.:

250089G5

Recommended Dilutions:

IF/ICC: 1:50-1:500

Excitation/Emission maxima wavelengths:

588 nm / 604 nm

Applications

Tested Applications:

IF/ICC

Species Specificity:

human

Positive Controls:

IF/ICC : HepG2 cells,

Background Information

CDC5L is ubiquitously expressed in humans, with relatively high expression levels in testis, bone marrow, and 25 other tissues. In proliferating cells, CDC5L is constitutively expressed, suggesting its regulation may occur through post-translational modifications. CDC5L plays a critical role in the cell cycle, particularly in the G2/M transition. It interacts with cyclins and cyclin-dependent kinases (CDKs), helping to control the timing and accuracy of cell division.

Storage

Storage:

Store at -20°C. Avoid exposure to light. Stable for one year after shipment.

Storage Buffer:

PBS with 50% glycerol, 0.05% Proclin300, 0.5% BSA, pH7.3

Aliquoting is unnecessary for -20°C storage

For technical support and original validation data for this product please contact:

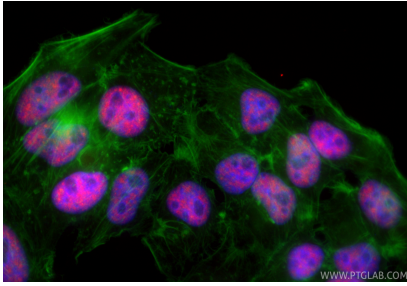
T: 4006900926

E: Proteintech-CN@ptglab.com

W: ptgcn.com

This product is exclusively available under Proteintech Group brand and is not available to purchase from any other manufacturer.

Selected Validation Data



Immunofluorescent analysis of (4% PFA) fixed HepG2 cells using CoraLite®594 CDC5L antibody (CL594-85788-5, Clone: 250089G5) at dilution of 1:200, CL488-Phalloidin (green).