

For Research Use Only

CoraLite®594-conjugated KAP1 Recombinant monoclonal antibody

Catalog Number:CL594-85693-4



Basic Information

Catalog Number: CL594-85693-4	GenBank Accession Number: BC004978	Purification Method: Protein A purification
Source: Rabbit	GeneID (NCBI): 10155	CloneNo.: 243043D10
Isotype: IgG	UNIPROT ID: Q13263	Recommended Dilutions: IF/ICC: 1:50-1:500
Immunogen Catalog Number: AG7350	Full Name: tripartite motif-containing 28	Excitation/Emission maxima wavelengths: 588 nm / 604 nm
	Calculated MW: 89 kDa	
	Observed MW: 100-120 kDa	

Applications

Tested Applications: IF/ICC	Positive Controls: IF/ICC : HepG2 cells,
Species Specificity: human	

Background Information

KAP1, also named as TRIM28 or RNF96, is a 835 amino acid protein, which contain one RING-type zinc finger, one PHD-type zinc finger, one bromo domain and two B box-type zinc fingers. KAP1 localizes in the nucleus and belongs to the TRIM/RBCC family. KAP1 is a nuclear corepressor for KRAB domain-containing zinc finger proteins and mediates gene silencing by recruiting CHD3, a subunit of the nucleosome remodeling and deacetylation (NuRD) complex, and SETDB1 to the promoter regions of KRAB target genes. KAP1 is expressed in all tissues tested including spleen, thymus, prostate, testis, ovary, small intestine, colon and peripheral blood leukocytes. The calculated molecular weight of KAP1 is 89 kDa, but modified KAP1 is about 100 kDa. (PMID: 18590578)

Storage

Storage:
Store at -20°C. Avoid exposure to light. Stable for one year after shipment.
Storage Buffer:
PBS with 50% glycerol, 0.05% Proclin300, 0.5% BSA, pH7.3
Aliquoting is unnecessary for -20°C storage

For technical support and original validation data for this product please contact:

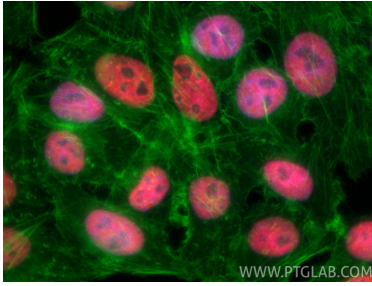
T: 4006900926

E: Proteintech-CN@ptglab.com

W: ptgcn.com

This product is exclusively available under Proteintech Group brand and is not available to purchase from any other manufacturer.

Selected Validation Data



Immunofluorescent analysis of (4% PFA) fixed HepG2 cells using CoraLite®594 KAP1 antibody (CL594-85693-4, Clone: 243043D10) at dilution of 1:200, CL488-Phalloidin (green).