

For Research Use Only

CoraLite®594-conjugated KTN1 Recombinant antibody

Catalog Number:CL594-85681-4



Basic Information

Catalog Number:

CL594-85681-4

Concentration:

1000 ug/ml

Source:

Rabbit

Isotype:

IgG

Immunogen Catalog Number:

AG13854

GenBank Accession Number:

BC117132

GeneID (NCBI):

3895

UNIPROT ID:

Q86UP2

Full Name:

kinectin 1 (kinesin receptor)

Calculated MW:

1357 aa, 156 kDa

Observed MW:

156 kDa

Purification Method:

Protein A purification

CloneNo.:

243067A11

Recommended Dilutions:

IF/ICC: 1:50-1:500

Excitation/Emission maxima
wavelengths:

588 nm / 604 nm

Applications

Tested Applications:

IF/ICC

Species Specificity:

human

Positive Controls:

IF/ICC : HepG2 cells, SKOV-3 cells

Background Information

KTN1/Kinectin is an integral endoplasmic reticulum (ER) membrane protein which acts as dynamic anchor to facilitate ER membrane extension along microtubules. It has been found to bind kinesin, Rho GTPase, and translation elongation factor-1delta and gets involved in organelle motility and protein synthesis.

Storage

Storage:

Store at -20°C. Avoid exposure to light. Stable for one year after shipment.

Storage Buffer:

PBS with 50% glycerol, 0.05% Proclin300, 0.5% BSA, pH7.3

Aliquoting is unnecessary for -20°C storage

For technical support and original validation data for this product please contact:

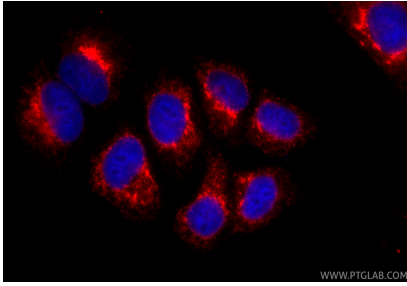
T: 4006900926

E: Proteintech-CN@ptglab.com

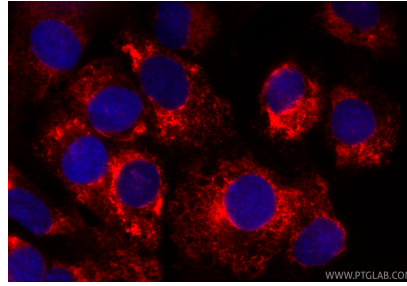
W: ptgcn.com

This product is exclusively available under Proteintech Group brand and is not available to purchase from any other manufacturer.

Selected Validation Data



Immunofluorescent analysis of (-20°C Ethanol) fixed HepG2 cells using CoraLite®594 KTN1 antibody (CL594-85681-4, Clone: 243067A11) at dilution of 1:200.



Immunofluorescent analysis of (4% PFA) fixed SKOV-3 cells using CoraLite®594 KTN1 antibody (CL594-85681-4, Clone: 243067A11) at dilution of 1:200.