

For Research Use Only

CoraLite®594-conjugated SEC31A Recombinant antibody

Catalog Number: CL594-84942-4



Basic Information

Catalog Number:

CL594-84942-4

Concentration:

1000 ug/ml

Source:

Rabbit

Isotype:

IgG

Immunogen Catalog Number:

AG12314

GenBank Accession Number:

BC084583

GeneID (NCBI):

22872

UNIPROT ID:

O94979

Full Name:

SEC31 homolog A (S. cerevisiae)

Calculated MW:

1220 aa, 133 kDa

Observed MW:

118-140 kDa

Purification Method:

Protein A purification

CloneNo.:

242531E2

Recommended Dilutions:

IF/ICC: 1:50-1:500

Excitation/Emission maxima
wavelengths:

588 nm / 604 nm

Applications

Tested Applications:

IF/ICC

Species Specificity:

human

Positive Controls:

IF/ICC : HeLa cells,

Background Information

COPII-coated vesicles mediate anterograde transport from the ER to the Golgi apparatus. COPII is composed of three parts: two coat protein complexes (Sec23/24 complex and Sec13/31 complex) and one small GTP-binding protein, Sar1 (PMID: 9568718). The sec31 subunit of the coat complex has been shown to be essential for vesicle formation and ER-Golgi transport (PMID: 10788476). Two mammalian homologs of yeast sec31p, Sec31A and Sec31B, share about 40% amino acid identity. Sec31A transcripts are ubiquitously and abundantly expressed.

Storage

Storage:

Store at -20°C. Avoid exposure to light. Stable for one year after shipment.

Storage Buffer:

PBS with 50% glycerol, 0.05% Proclin300, 0.5% BSA, pH7.3

Aliquoting is unnecessary for -20°C storage

For technical support and original validation data for this product please contact:

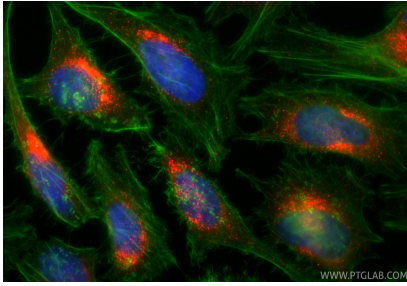
T: 4006900926

E: Proteintech-CN@ptglab.com

W: ptgcn.com

This product is exclusively available under Proteintech Group brand and is not available to purchase from any other manufacturer.

Selected Validation Data



Immunofluorescent analysis of (4% PFA) fixed HeLa cells using CoraLite®594 SEC31A antibody (CL594-84942-4, Clone: 242531E2) at dilution of 1:200, CL488-Phalloidin (green).