

For Research Use Only

CoraLite®594-conjugated TFEB Recombinant monoclonal antibody

Catalog Number:CL594-84675-5



Basic Information

Catalog Number: CL594-84675-5	GenBank Accession Number: BC032448	Purification Method: Protein A purification
Source: Rabbit	GeneID (NCBI): 7942	CloneNo.: 242093D11
Isotype: IgG	UNIPROT ID: P19484	Recommended Dilutions: IF/ICC: 1:50-1:500
Immunogen Catalog Number: AG4194	Full Name: transcription factor EB	Excitation/Emission maxima wavelengths: 588 nm / 604 nm
	Calculated MW: 476 aa, 53 kDa	
	Observed MW: 65-70 kDa	

Applications

Tested Applications: IF/ICC	Positive Controls: IF/ICC : HeLa cells,
Species Specificity: human, mouse	

Background Information

Transcription factor EB(TFEB) is one of the transcription factors that contain a basic HLH-ZIP domain(for DNA binding) and HLH and ZIP domains(for oligomerization). TFEB specifically recognizes and binds to E-box sequences, which required dimerization with itself or another MiT/TFE family member. It plays a role in T-cell-dependent antibody responses to activated CD4+ T-cells and thymus-dependent humoral immunity once associated with TFE3. It also activates lysosomal gene by binding the CLEAR-box sequence in the regulatory region. It involves in the signal transduction processes required for normal vascularization of the placenta. This is a rabbit polyclonal antibody raised against the full length of human TFEB. The calculated molecular weight of TFEB is 53 kDa, but modified TFEB is about 65-70 kDa (PMID: 12837690). TFEB mainly present in the cytoplasm (PubMed:23434374). Under aberrant lysosomal storage conditions, it translocates from the cytoplasm to the nucleus (PubMed:23434374). Fisetin increases the levels of TFEB localized in nuclei (PMID: 27112200).

Storage

Storage:
Store at -20°C. Avoid exposure to light. Stable for one year after shipment.
Storage Buffer:
PBS with 50% glycerol, 0.05% Proclin300, 0.5% BSA, pH7.3
Aliquoting is unnecessary for -20°C storage

For technical support and original validation data for this product please contact:

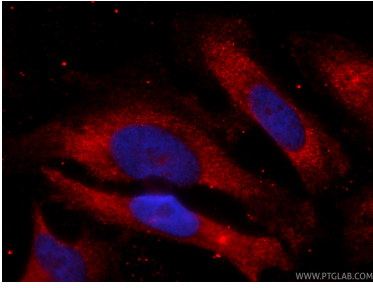
T: 4006900926

E: Proteintech-CN@ptglab.com

W: ptgcn.com

This product is exclusively available under Proteintech Group brand and is not available to purchase from any other manufacturer.

Selected Validation Data



Immunofluorescent analysis of (-20°C Ethanol) fixed HeLa cells using CoraLite@594 TFEb antibody (CL594-84675-5, Clone: 242093D11) at dilution of 1:200.