

For Research Use Only

CoraLite®594-conjugated Albumin Recombinant antibody

Catalog Number: CL594-82783-6



Basic Information

Catalog Number:

CL594-82783-6

Size:

1000 µg/ml

Source:

Rabbit

Isotype:

IgG

Immunogen Catalog Number:

AG9569

GenBank Accession Number:

BC034023

GeneID (NCBI):

213

UNIPROT ID:

P02768

Full Name:

albumin

Calculated MW:

609 aa, 69 kDa

Observed MW:

66 kDa

Purification Method:

Protein A purification

CloneNo.:

4K1

Recommended Dilutions:

IF-P 1:50-1:500

Excitation/Emission maxima

wavelengths:

588 nm / 604 nm

Applications

Tested Applications:

IF-P

Species Specificity:

human, mouse, rat

Positive Controls:

IF-P: mouse liver tissue,

Background Information

Albumin is the most abundant protein in blood plasma. Alterations of level of serum albumin are linked to variety of diseases. Albumin is expressed exclusively by well-differentiated hepatocytes, thus anti-albumin has been used to mark hepatocytes. (21388516, 23832071)

Storage

Storage:

Store at -20°C. Avoid exposure to light. Stable for one year after shipment.

Storage Buffer:

PBS with 50% Glycerol, 0.05% Proclin300, 0.5% BSA, pH 7.3.

Aliquoting is unnecessary for -20°C storage

For technical support and original validation data for this product please contact:

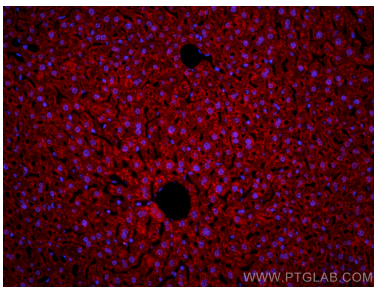
T: 4006900926

E: Proteintech-CN@ptglab.com

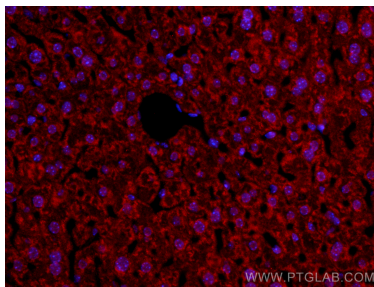
W: ptgcn.com

This product is exclusively available under Proteintech Group brand and is not available to purchase from any other manufacturer.

Selected Validation Data



Immunofluorescent analysis of (4% PFA) fixed paraffin-embedded mouse liver tissue using CoraLite®594 Albumin antibody (CL594-82783-6, Clone: 4K1) at dilution of 1:200. Heat mediated antigen retrieval with Tris-EDTA buffer (pH 9.0).



Immunofluorescent analysis of (4% PFA) fixed paraffin-embedded mouse liver tissue using CoraLite®594 Albumin antibody (CL594-82783-6, Clone: 4K1) at dilution of 1:200. Heat mediated antigen retrieval with Tris-EDTA buffer (pH 9.0).