

For Research Use Only

CoraLite®594-conjugated Occludin Recombinant monoclonal antibody

Catalog Number:CL594-80545



Basic Information

Catalog Number: CL594-80545	GenBank Accession Number: BC029886	Purification Method: Protein A purification
Source: Rabbit	GeneID (NCBI): 4950	CloneNo.: 8B2
Isotype: IgG	UNIPROT ID: Q16625	Recommended Dilutions: IF/ICC: 1:50-1:500
Immunogen Catalog Number: AG26173	Full Name: occludin	Excitation/Emission maxima wavelengths: 588 nm / 604 nm
	Calculated MW: 522 aa, 59 kDa	
	Observed MW: 59 kDa	

Applications

Tested Applications: IF/ICC	Positive Controls: IF/ICC : MCF-7 cells,
Species Specificity: human, mouse, pig	

Background Information

Occludin is an integral membrane protein located at the tight junction. It is a tetraspanin protein with four transmembrane domains, intracellular N and C termini, and two extracellular loops. Occludin plays a role in the formation and regulation of the tight junction paracellular permeability barrier. Occludin can exist in different isoforms, owing to modifications at the posttranscriptional and posttranslational levels. The monomeric occludin migrates as 53-65 kDa on SDS-PAGE (PMID: 22083955; 19457074).

Storage

Storage:
Store at -20°C. Avoid exposure to light. Stable for one year after shipment.
Storage Buffer:
PBS with 50% glycerol, 0.05% Proclin300, 0.5% BSA, pH7.3
Aliquoting is unnecessary for -20°C storage

For technical support and original validation data for this product please contact:

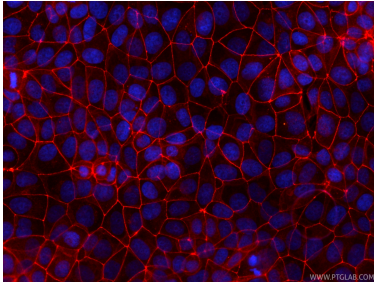
T: 4006900926

E: Proteintech-CN@ptglab.com

W: ptgcn.com

This product is exclusively available under Proteintech Group brand and is not available to purchase from any other manufacturer.

Selected Validation Data



Immunofluorescent analysis of (4% PFA) fixed MCF-7 cells using CoraLite®594 Occludin antibody (CL594-80545, Clone: 8B2) at dilution of 1:200.