

CoraLite[®]594-conjugated TDP-43 (for IF/FC) Recombinant antibody

Catalog Number: CL594-80002

Basic Information

Catalog Number: CL594-80002	GenBank Accession Number: BC001487	Purification Method: Protein A purification
Size: 1000 µg/ml	GeneID (NCBI): 23435	CloneNo.: 16A22
Source: Rabbit	UNIPROT ID: Q13148	Recommended Dilutions: IF/ICC 1:50-1:500
Isotype: IgG	Full Name: TAR DNA binding protein	Excitation/Emission maxima wavelengths: 588 nm / 604 nm
Immunogen Catalog Number: AG1231	Calculated MW: 43 kDa	
	Observed MW: 43 kDa	

Applications

Tested Applications: IF/ICC	Positive Controls: IF/ICC : HeLa cells,
Species Specificity: human, mouse, rat	

Background Information

The TARDBP gene encodes the TDP-43 protein, initially found to repress HIV-1 transcription by binding TAR DNA. TDP-43 has since been shown to bind RNA as well as DNA, and have multiple functions in transcriptional repression, translational regulation and pre-mRNA splicing. For instance, it is reported to regulate alternate splicing of the CTFR gene. In 2006 Neumann et al. found that hyperphosphorylated, ubiquitinated and/or cleaved forms of TDP-43, collectively known as pathological TDP-43, play a major role in the disease mechanisms of ubiquitin-positive, tau- and alpha-synuclein-negative frontotemporal dementia (FTLD-U) and in amyotrophic lateral sclerosis (ALS).

Storage

Storage:
Store at -20°C. Avoid exposure to light. Stable for one year after shipment.
Storage Buffer:
PBS with 50% Glycerol, 0.05% Proclin300, 0.5% BSA, pH 7.3.
Aliquoting is unnecessary for -20°C storage

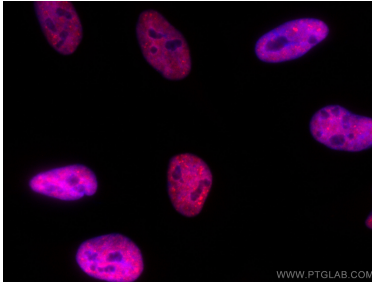
For technical support and original validation data for this product please contact:

T: 4006900926

E: Proteintech-CN@ptglab.comW: ptgcn.com

This product is exclusively available under Proteintech Group brand and is not available to purchase from any other manufacturer.

Selected Validation Data



Immunofluorescent analysis of (4% PFA) fixed HeLa cells using CoraLite®594 TDP-43 (for IF/FC) antibody (CL594-80002, Clone: 16A22) at dilution of 1:200.