

For Research Use Only

CoraLite®594-conjugated MCM6 Monoclonal antibody



Catalog Number:CL594-67989

Basic Information

Catalog Number:

CL594-67989

Size:

1000 µg/ml

Source:

Mouse

Isotype:

IgG1

Immunogen Catalog Number:

AG4354

GenBank Accession Number:

BC032374

GeneID (NCBI):

4175

UNIPROT ID:

Q14566

Full Name:

minichromosome maintenance
complex component 6

Calculated MW:

821 aa, 93 kDa

Observed MW:

105 kDa

Purification Method:

Protein G purification

CloneNo.:

2E12H1

Recommended Dilutions:

IF 1:50-1:500

Excitation/Emission maxima
wavelengths:

588 nm / 604 nm

Applications

Tested Applications:

FC (Intra), IF/ICC

Species Specificity:

Human, Rat, Mouse

Positive Controls:

IF : HepG2 cells,

Background Information

The MCM genes were firstly identified in yeast defective in minichromosome maintenance and have since been shown to have roles in the progression of the cell cycle, and most of them are cell division control genes[PMID: 18096807]. MCM2-7 complex are suggested to be 'DNA licensing factors' which bind to the DNA after mitosis and enable DNA replication before being removed during S phase. Mini-chromosome maintenance 6 (MCM6) is one component of the MCM2-7 complex which is the putative replicative helicase essential for 'once per cell cycle' DNA replication initiation and elongation in eukaryotic cells[PMID: 9305914]. MCM6 single subunit forms homohexamer and contains an ATP-dependent and replication fork stimulated 3' to 5' DNA unwinding activity along with intrinsic DNA-dependent ATPase and ATP-binding activities [PMID:21336027]. The calculated molecular weight of MCM6 is 92 kDa, but the modified MCM6 is about 105 kDa.

Storage

Storage:

Store at -20°C. Avoid exposure to light. Stable for one year after shipment.

Storage Buffer:

PBS with 50% Glycerol, 0.05% Proclin300, 0.5% BSA, pH 7.3.

Aliquoting is unnecessary for -20°C storage

For technical support and original validation data for this product please contact:

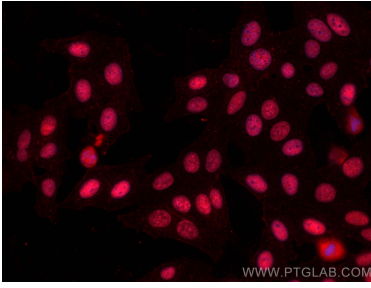
T: 4006900926

E: Proteintech-CN@ptglab.com

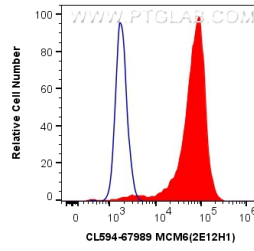
W: ptgcn.com

This product is exclusively available under Proteintech Group brand and is not available to purchase from any other manufacturer.

Selected Validation Data



Immunofluorescent analysis of (-20°C Ethanol) fixed HepG2 cells using CoraLite®594 MCM6 antibody (CL594-67989, Clone: 2E12H1) at dilution of 1:200.



1X10⁶ HepG2 cells were intracellularly stained with 0.4 ug CoraLite®594 Anti-Human MCM6 (CL594-67989, Clone:2E12H1) (red), or 0.4 ug Isotype Control. Cells were fixed and permeabilized with Transcription Factor Staining Buffer Kit (PF00011).