

CoraLite®594-conjugated ATG16L1 Monoclonal antibody

Catalog Number: **CL594-67943**

Basic Information

Catalog Number:

CL594-67943

Size:

1000 µg/ml

Source:

Mouse

Isotype:

IgG1

Immunogen Catalog Number:

AG14881

GenBank Accession Number:

BC000061

GeneID (NCBI):

55054

UNIPROT ID:

Q676U5

Full Name:

ATG16 autophagy related 16-like 1 (S.cerevisiae)

Calculated MW:

607 aa, 68 kDa

Observed MW:

68-75 kDa

Purification Method:

Protein G purification

CloneNo.:

1G5G7

Recommended Dilutions:

IF/ICC 1:50-1:500

Excitation/Emission maxima

wavelengths:
588 nm / 604 nm

Applications

Tested Applications:

IF/ICC

Species Specificity:

Human, mouse, rat

Positive Controls:

IF/ICC : HepG2 cells,

Background Information

Human ATG16L1 is a 607 amino acid protein (~68 kDa) comprising three major domains: the N - terminal ATG5 binding domain (ATG5 - BD), the central coiled - coil domain (CCD) and a predicted C - terminal WD40 - domain. ATG16L1 α and β (Atg16L1 α , 63 kDa; and Atg16L1 β , 71 kDa) are the major isoforms expressed in intestinal epithelium and macrophages, and all isoforms encode exon 9, which contains Thr 300. Atg16L1 mediates the cellular degradative process of autophagy and is considered a critical regulator of inflammation based on its genetic association with inflammatory bowel disease. ATG16L1 has been implicated in Crohn's disease. (PMID: 24553140, PMID: 22740627, PMID: 28685931)

Storage

Storage:

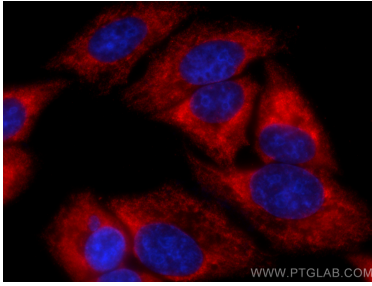
Store at -20°C. Avoid exposure to light. Stable for one year after shipment.

Storage Buffer:

PBS with 50% Glycerol, 0.05% Proclin300, 0.5% BSA, pH 7.3.

Aliquoting is unnecessary for -20°C storage

Selected Validation Data



Immunofluorescent analysis of (-20°C Methanol) fixed HepG2 cells using CoraLite®594 ATG16L1 antibody (CL594-67943, Clone: 1G5G7) at dilution of 1:200.