

CoraLite®594-conjugated CIP2A Monoclonal antibody

Catalog Number: **CL594-67843**

Basic Information

Catalog Number:

CL594-67843

Size:

1000 µg/ml

Source:

Mouse

Isotype:

IgG1

Immunogen Catalog Number:

AG19598

GenBank Accession Number:

BC130564

GeneID (NCBI):

57650

UNIPROT ID:

Q8TCG1

Full Name:

KIAA1524

Calculated MW:

905 aa, 102 kDa

Observed MW:

102 kDa

Purification Method:

Protein G purification

CloneNo.:

2A3F3

Recommended Dilutions:

IF/ICC 1:50-1:500

**Excitation/Emission maxima
wavelengths:**

588 nm / 604 nm

Applications

Tested Applications:

IF/ICC

Species Specificity:

Human, rat

Positive Controls:

IF/ICC : HeLa cells,

Background Information

Cancerous inhibitor of protein phosphatase 2A (CIP2A) was originally identified as a cellular protein phosphatase 2A (PP2A) inhibitor, and has been shown to control oncogenic cellular signals by suppressing the tumor suppressor PP2A. CIP2A overexpression has been found in several human malignancies including breast cancer, hepatocellular carcinoma, gastric cancer, head and neck cancer, colon cancer, prostate cancer and non-small cell lung cancer. CIP2A is a 83~102 kDa cytoplasmic protein. (PMID: 26824320, PMID: 25458953, PMID: 29720672)

Storage

Storage:

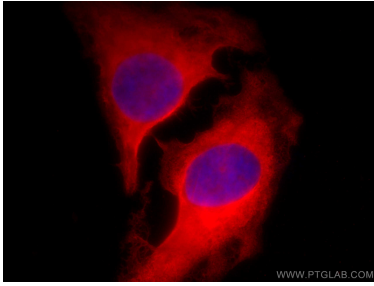
Store at -20°C. Avoid exposure to light. Stable for one year after shipment.

Storage Buffer:

PBS with 50% Glycerol, 0.05% Proclin300, 0.5% BSA, pH 7.3.

Aliquoting is unnecessary for -20°C storage

Selected Validation Data



Immunofluorescent analysis of (-20°C Methanol) fixed HeLa cells using CoraLite®594 CIP2A antibody (CL594-67843, Clone: 2A3F3) at dilution of 1:200.