

For Research Use Only

# CoraLite®594-conjugated IgG lambda chain Monoclonal antibody



Catalog Number:CL594-67762

## Basic Information

Catalog Number:

CL594-67762

Size:

1000 µg/ml

Source:

Mouse

Isotype:

IgG2a

Immunogen Catalog Number:

AG14783

GenBank Accession Number:

BC007782

GeneID (NCBI):

3537

Full Name:

immunoglobulin lambda constant 1  
(Mcg marker)

Calculated MW:

233 aa, 25 kDa

Observed MW:

~25 kDa

Purification Method:

Protein A purification

CloneNo.:

1D12B5

Recommended Dilutions:

IF-P 1:200-1:800

Excitation/Emission maxima  
wavelengths:

588 nm / 604 nm

## Applications

Tested Applications:

IF-P

Species Specificity:

Human

Positive Controls:

IF-P: human tonsillitis tissue,

## Background Information

This antibody detects Lambda chain of human IgG.

## Storage

Storage:

Store at -20°C. Avoid exposure to light.

Storage Buffer:

PBS with 50% Glycerol, 0.05% Proclin300, 0.5% BSA, pH 7.3.

Aliquoting is unnecessary for -20°C storage

For technical support and original validation data for this product please contact:

T: 4006900926

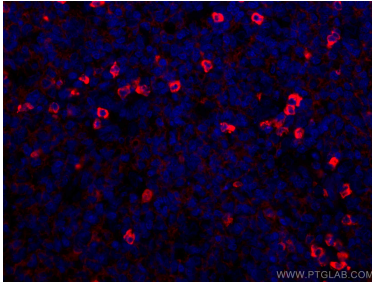
E: [Proteintech-CN@ptglab.com](mailto:Proteintech-CN@ptglab.com)

W: [ptgcn.com](http://ptgcn.com)

This product is exclusively available under Proteintech Group brand and is not available to purchase from any other manufacturer.

---

## Selected Validation Data



Immunofluorescent analysis of (4% PFA) fixed human tonsillitis tissue using CoraLite®594 Human IgG lambda chain antibody (CL594-67762, Clone: 1D12B5 ) at dilution of 1:400.